



Download Clinical Guidelines

## Guideline

# The Urological Association of Asia clinical guideline for urinary stone disease

Kazumi Taguchi,<sup>1</sup> Sung Yong Cho,<sup>2,3</sup> Anthony CF Ng,<sup>4</sup> Manint Usawachintachit,<sup>5</sup> Yung-Khan Tan,<sup>6</sup> Yao Liang Deng,<sup>7</sup> Cheng-Huang Shen,<sup>8</sup> Prem Gyawali,<sup>9</sup> Husain Alenezi,<sup>10</sup> Abbas Basiri,<sup>11</sup> Sopheap Bou,<sup>12</sup> Tarmono Djojodemedjo,<sup>13</sup> Kemal Sarica,<sup>14</sup> Lei Shi,<sup>15</sup> Praveen Singam,<sup>16</sup> Shrawan Kumar Singh<sup>17</sup> and Takahiro Yasui<sup>1</sup>

<sup>1</sup>Department of Nephro-urology, Nagoya City University Graduate School of Medical Sciences, Nagoya, Japan, <sup>2</sup>Department of Urology, Seoul Metropolitan Government - Seoul National University Boramae Medical Center, <sup>3</sup>Seoul National University Hospital, Seoul, Korea, <sup>4</sup>SH Ho Urology Center, Department of Surgery, The Chinese University of Hong Kong, Hong Kong, <sup>5</sup>Division of Urology, Faculty of Medicine, Chulalongkorn University, King Chulalongkorn Memorial Hospital, The Thai Red Cross Society, Bangkok, Thailand, <sup>6</sup>Urohealth Medical Clinic, Mt Elizabeth Hospital, Singapore, <sup>7</sup>Department of Urology, Langdong Hospital and The First Affiliated Hospital, Guangxi Medical University, Nanning, China, <sup>8</sup>Department of Urology, Chia-Yi Christian Hospital, Chiayi, Taiwan, <sup>9</sup>Department of Urology, Tribhuvan University Teaching Hospital, Kathmandu, Nepal, <sup>10</sup>Sabah Al-Ahmad Urology Center and Adan Hospital, Kuwait, <sup>11</sup>Department of Urology, Shahid Labbafinejad Medical Center, Shahid Beheshti University of Medical Sciences, Tehran, Iran, <sup>12</sup>Department of Urology, Royal Phnom Penh Hospital, Phnom Penh, Cambodia, <sup>13</sup>Department of Urology, Soetomo General Academia Hospital/Faculty of Medicine, Airlangga University, Surabaya, Indonesia, <sup>14</sup>Department of Urology, Kafkas University Medical School, Kars, Turkey, <sup>15</sup>Department of Urology, Yantai Yuhuangding Hospital and Medical School, Qingdao University, Yantai, China, <sup>16</sup>KPJ Kajang Specialist Hospital, Selangor, Malaysia, and <sup>17</sup>Department of Urology, Post Graduate Institute of Medical Education and Research, Chandigarh, India

### Abbreviations & Acronyms

AUA = American Urological Association  
BMI = body mass index  
CI = confidence interval  
CT = computed tomography  
EAU = European Association of Urology  
ECIRS = endoscopic combined intrarenal surgery  
Flex = flexible  
GR = grade of recommendation  
HU = Hounsfield unit  
INR = international normalized ratio  
IVU = intravenous urography  
JUA = Japanese Urological Association  
KUB = kidney ureter bladder  
LE = level of evidence  
MET = medical expulsive therapy  
mPCNL = miniaturized percutaneous nephrolithotripsy  
MRI = magnetic resonance imaging  
NCCT = non-contrast computed tomography

**Abstract:** The Urological Association of Asia, consisting of 25 member associations and one affiliated member since its foundation in 1990, has planned to develop Asian guidelines for all urological fields. The field of stone diseases is the third of its guideline projects. Because of the different climates, and social, economic and ethnic environments, the clinical practice for urinary stone diseases widely varies among the Asian countries. The committee members of the Urological Association of Asia on the clinical guidelines for urinary stone disease carried out a surveillance study to better understand the diversity of the treatment strategy among different regions and subsequent systematic literature review through PubMed and MEDLINE database between 1966 and 2017. Levels of evidence and grades of recommendation for each management were decided according to the relevant strategy. Each clinical question and answer were thoroughly reviewed and discussed by all committee members and their colleagues, with suggestions from expert representatives of the American Urological Association and European Association of Urology. However, we focused on the pragmatic care of patients and our own evidence throughout Asia, which included recent surgical trends, such as miniaturized percutaneous nephrolithotomy and endoscopic combined intrarenal surgery. This guideline covers all fields of stone diseases, from etiology to recurrence prevention. Here, we present a short summary of the first version of the guideline – consisting 43 clinical questions – and overview its key practical issues.

**Key words:** grade recommendation, guideline, level of evidence, urolithiasis, Urological Association of Asia.

## Introduction

### Aims and scope

Asia is the largest continent and accounts for approximately 60% of the world's population. The UAA includes many countries with diverse backgrounds in medicine, climate, insurance

nephro = nephroscopy  
 NHANES = National Health and Nutrition Examination Survey  
 NLR = neutrophil-to-lymphocyte ratio  
 NSAIDs = non-steroidal anti-inflammatory drugs  
 PCNL = percutaneous nephrolithotripsy  
 PT = prothrombin time  
 RCT = randomized controlled trial  
 RIRS = retrograde intrarenal surgery  
 SFR = stone-free rates  
 S-ReSC = Seoul National University Renal Stone Complexity  
 SWL = shock wave lithotripsy  
 UAA = Urological Association of Asia  
 UPJ = ureteropelvic junction  
 URS = ureteroscopy  
 US = ultrasonography  
 UTI = urinary tract infection

**Correspondence:** Takahiro Yasui M.D., Ph.D., Department of Nephro-urology, Nagoya City University Graduate School of Medical Science, 1 Kawasumi, Mizuho-ku, Mizuho-cho, Nagoya 467-8601, Japan. Email: yasui@med.nagoya-cu.ac.jp

Received 24 November 2018; accepted 4 March 2019.

This article is the summarized version of the following article: <http://uaanet.org/data/UAA-CGL-urinary-stone-disease.pdf>.

systems, equipment, and access to hospitals and facilities. We are required to establish a consensus on treatment. The UAA Clinical Guidelines for Stone Disease have been prepared to help urologists apply evidence-based management to stones/calculi and incorporate recommendations into clinical practice. The document covers most aspects of the disease, which is still a cause of significant morbidity despite technological and scientific advances. The Work Group is aware of the geographical variations in the provision of healthcare. Diverse treatment alternatives might be possible depending on the social environment of the relevant case(s); however, the best treatment also depends on the circumstances of each individual case and is not uniform. This guideline aims to obtain a consensus on the treatment approach for urinary stone disease. The entire version of this guideline is available on the UAA website. Here, we present a short summary of the first version of the guideline and overview its key practical issues.

## Diversity of treatment strategies among the UAA

Due to the different climates, and social, economic and ethnic environments, there is huge diversity in clinical practice for urinary stone disease among Asian countries. Table 1 summarizes treatment strategies for each UAA representative for different stone cases. In accordance with other guidelines, SWL and endoscopic lithotomy, such as RIRS, URS and PCNL are preferred choices in Asia; however, some countries in the Middle East and Southeastern Asia still apply open/laparoscopic pyelolithotomy and ureterolithotomy as surgical options for treatment of renal staghorn and ureteral impacted stones, respectively. Another interesting treatment option often chosen in Korea, Japan and Turkey is ECIRS. For pediatric renal stone cases, SWL is still the standard in the majority of the associations, but RIRS and minimally invasive PCNL are also accepted as reasonable options.

## Methods

### Data identification

The Guideline for Stone Diseases was developed by committee members recommended by the UAA. The members meticulously reviewed the relevant references retrieved via the PubMed and MEDLINE databases published between 1966 through 31 July 2017.

The search strategy included the following medical subject headings (MeSH) for stone diseases: “Stone” [MeSH], “Urolithiasis” [MeSH], “Nephrolithiasis” [MeSH] and “Calculi” [MeSH]. Other key words for searching references were selected by each committee.

Other sources of information included: (i) JUA clinical guidelines for urolithiasis; (ii) EAU Guidelines on Urolithiasis 2017, published by the EAU; (iii) Medical Management of Kidney Stones: AUA Guidelines, published by the AUA; and (iv) Surgical Management of Stones: AUA/Endourological Society Guidelines.

### LE and GR

The LE and GR for each treatment were made based on the following strategy. The recommendations for treatment were based on a non-structured literature search, which has been previously published, and labeled with a LE score according to a classification system modified from the Oxford Centre for Evidence-based Medicine Levels of Evidence, ranging from LE:1 (highest evidence level) to LE:5 (case study or expert opinion; Table S1).<sup>1</sup>

## Clinical questions and answers

### Etiology

#### CQ 1. Is the prevalence of urinary stone disease increasing?

- The prevalence and incidence of urinary stone disease have increased in many countries in recent years (LE:2, GR:A).
- There is growing evidence of an increasing incidence of stones in the USA (LE:2).
- The increase in the prevalence is less marked, or stable, in Europe (LE:3).
- An upward trend in urinary stone disease has been noted in Asia (LE:3).

**Table 1** Treatment approaches of different stone cases among different UAA representatives

	47-year-old man, left partial staghorn stone (40 mm)	65-year-old man, left renal pelvic stone (18 mm)	75-year-old woman, right lower calyx stone (10 mm)	50-year-old women, right mid-ureter stone (13 mm) with moderate hydronephrosis	8-year-old boy, right renal pelvic stone (8 mm)
Cambodia	1: Pyelo-nephrolithotomy 2: PCNL (+stenting)	1: Pyelolithotomy (+stenting)	1: PCNL	1: URS (+pre-stenting) 2: Ureterolithotomy (+stenting)	1: Pyelolithotomy (+stenting)
China	1: PCNL	1: RIRS or mini-PCNL (HU >500) 2: SWL (HU <500)	1: Observation 2: RIRS 3: Micro to mini-PCNL or 1: Ultra-mini-PCNL	1: URS 2: Antegrade URS	1: SWL 2: RIRS (+pre-stenting) or 1: Ultra-mini-PCNL
Hong Kong	1: PCNL	1: PCNL	2: SWL	1: URS	1: SWL
India	1: PCNL 2: Robotic/laparoscopic pyelolithotomy 3: Pyelolithotomy/extended pyelolithotomy	1: PCNL (>1000 HU) 2: SWL (<1000 HU) 3: RIRS	1: SWL (favorable anatomy and stone density) 2: RIRS 3: Mini-PCNL	1: URS 2: Laparoscopic ureterolithotomy	1: SWL 2: Micro-PCNL 3: RIRS
Indonesia	1: Standard/mini-PCNL 2: RIRS 3: Pyelolithotomy	1: Standard/mini-PCNL 2: RIRS 3: SWL 4: Pyelolithotomy	1: SWL (infundibulum is wide and angle of calyx >30) 2: RIRS 3: Standard/mini-PCNL	1: URS 2: Ureterolithotomy	1: SWL 2: RIRS 3: Mini-PCNL
Iran	1: PCNL 2: Multittract mini-PCNL	1: SWL 2: RIRS or mini-PCNL	1: SWL 2: RIRS or mini-PCNL	1: URS 2: Laparoscopic ureterolithotomy	1: SWL
Japan	1: ECIRS by mini-PCNL	1: RIRS 2: Mini-PCNL (+RIRS)	1: SWL 2: RIRS 3: Observation (depends on infundibular length, width)	1: URS (+pre-stenting or nephrostomy tube placement) 2: SWL (+pre-stenting)	1: SWL 2: RIRS (+pre-stenting)
Korea	1: PCNL (prone > supine) 2: ECIRS	1: RIRS 2: Mini-PCNL 3: PCNL	1: Observation 2: URS 3: SWL (if stone is not so hard)	1: URS (+pre-stenting or nephrostomy tube placement) 2: Antegrade URS 3: Laparoscopic ureterolithotomy	1: RIRS 2: SWL 3: Mini-PCNL
Kuwait	1: PCNL 2: Staged RIRS	1: RIRS (+pre-stenting) 2: Mini-PCNL (+stenting)	1: RIRS (+pre-stenting) 2: SWL	1: URS	1: SWL 2: RIRS
Malaysia	1: PCNL	1: PCNL 2: RIRS (+pre-stenting)	1: Observation (asymptomatic) 2: RIRS 3: SWL 4: Mini-PCNL with JJ stent (asymptomatic)	1: URS	1: SWL 2: Mini-PCNL
Nepal	1: PCNL	1: RIRS (HU <1100) or PCNL (HU >1100)	1: Observation (symptomatic) 2: RIRS	1: URS	1: SWL
Singapore	1: PCNL	1: RIRS 2: SWL	1: SWL or RIRS (depends on patient's preference)	1: URS	1: SWL
Taiwan	1: PCNL 2: ECIRS	1: SWL 2: RIRS 3: Mini-PCNL (HU >500 + severe hydro)	1: RIRS	1: URS	1: SWL 2: Mini-PCNL
Thailand	1: PCNL	1: SWL or RIRS	1: SWL or RIRS	1: URS (+pre-stenting)	1: SWL
Turkey	1: PCNL 2: ECIRS	1: RIRS (+stenting) 2: SWL (HU < 500)	1: Ultra-mini-PCNL	1: URS 2: Laparoscopic ureterolithotomy	1: SWL 2: RIRS

Countries are indicated in alphabetical order. Numbers in each column indicate the preference order of treatment options.

## Commentary

Urinary stone disease is a highly prevalent disease worldwide, with rates ranging from 7–13% in North America, 5–9% in Europe and 1–5% in Asia; however, there is significant variation in rates based on geography, climate, diet, fluid intake, genetics, sex, occupation and age.<sup>2–14</sup> It is difficult to evaluate the precise prevalence and incidence worldwide, because there are differences in assessment methods across countries. It should be noted that nationwide comparative studies are rare in developing countries.<sup>15</sup>

### CQ 2. How can stones be classified?

Stones can be categorized by etiology, chemical/mineral names, size and location (LE:3, GR:A).

The most common stone type is calcium oxalate, and some Asian countries have a higher percentage of this chemical composition compared to other parts of the world (LE:3, GR:A).

Stone composition is often associated with metabolic and/or genetic abnormalities (LE:3, GR:B).

## Commentary

Etiopathogenetic categorization of stones can include the following: non-infection stones, infectious causes, genetic-based stones or drug-induced stones (LE:4).<sup>16</sup>

Stone composition is the basis for further diagnostic and management decisions. Calcium phosphate stone composition is more likely to be associated with certain medical conditions or medications, such as renal tubular acidosis type 1, primary hyperparathyroidism, medullary sponge kidney and the use of carbonic anhydrase inhibitors (LE:3).<sup>17,18</sup>

Table 2 lists the clinically most relevant substances and their mineral components. Some unique trends, including calcium oxalate and cystine stones, have been reported from each country throughout Asia (LE:4).<sup>19–24</sup>

### CQ 3. What is the role of lifestyle in urinary stone disease?

- Metabolic syndrome is associated with stone formation (LE:4, GR:B).
- Fluid intake volume has been shown to be inversely related to urolithiasis (LE:1, GR:A).
- Soft drink consumption should be discouraged to reduce new stone formation (LE:2, GR:B).

## Commentary

Increased bodyweight and obesity have been shown to increase the risk of urinary stone formation.<sup>25</sup> A recent study in Taiwanese men showed there was a significant correlation between metabolic syndrome and nephrolithiasis.<sup>26</sup> Visceral fat was shown to be predictive of stone composition in a Korean population.<sup>27</sup> A higher fluid intake volume was associated with reduced stone formation rates. Higher water intake resulted in a reduced rate of stone recurrence in patients with a previous episode of calcium stones.<sup>28–31</sup> In addition, soft drink and ascorbic acid were shown to increase the risk of stone formation.<sup>29,30</sup>

### CQ 4. What is the role of metabolic components in urinary stone disease?

- Calcium intake should not be restricted, as there is an inverse relationship between dietary calcium and stone formation (LE:4, GR:A).
- High sodium intake is associated with an increased risk of stone formation (LE:4, GR:A).

**Table 2** List of variety of stone components

Chemical name	Mineral name	Chemical formula
Calcium oxalate monohydrate	Whewellite	CaC <sub>2</sub> O <sub>4</sub> H <sub>2</sub> O
Calcium oxalate dehydrate	Wheddelite	CaC <sub>2</sub> O <sub>4</sub> 2H <sub>2</sub> O
Basic calcium phosphate	Apatite	Ca <sub>10</sub> (PO <sub>4</sub> ) <sub>6</sub> (OH) <sub>2</sub>
Calcium hydroxyl phosphate	Carbonite apatite	Ca <sub>5</sub> (PO <sub>3</sub> ) <sub>3</sub> (OH)
β-Tricalcium phosphate	Whitlockite	Ca <sub>3</sub> (PO <sub>4</sub> ) <sub>2</sub>
Carbonate apatite phosphate	Dahllite	Ca <sub>5</sub> (PO <sub>4</sub> ) <sub>3</sub> OH
Calcium hydrogen phosphate	Brushite	PO <sub>4</sub> 2H <sub>2</sub> O
Calcium carbonate	Aragonite	CaCO <sub>3</sub>
Octacalcium phosphate		Ca <sub>8</sub> H <sub>2</sub> (PO <sub>4</sub> ) <sub>6</sub> ·5H <sub>2</sub> O
Uric acid	Uricite	C <sub>5</sub> H <sub>4</sub> N <sub>4</sub> O <sub>3</sub>
Uric acid dehydrate	Uricite	C <sub>5</sub> H <sub>4</sub> O <sub>3</sub> ·2H <sub>2</sub> O
Ammonium urate		NH <sub>4</sub> C <sub>5</sub> H <sub>3</sub> N <sub>4</sub> O <sub>3</sub>
Sodium acid urate monohydrate		NaC <sub>5</sub> H <sub>3</sub> N <sub>4</sub> O <sub>3</sub> ·H <sub>2</sub> O
Magnesium ammonium phosphate	Struvite	MgNH <sub>4</sub> PO <sub>4</sub> ·6H <sub>2</sub> O
Magnesium acid phosphate trihydrate	Newberyite	MgHPO <sub>4</sub> ·3H <sub>2</sub> O
Magnesium ammonium phosphate monohydrate	Dittmarite	MgNH <sub>4</sub> (PO <sub>4</sub> )·1H <sub>2</sub> O
Cystine		[SCH <sub>2</sub> CH(NH <sub>2</sub> )COOH] <sub>2</sub>
Xanthine		C <sub>5</sub> H <sub>4</sub> N <sub>4</sub> O <sub>2</sub>
2,8-Dihydroxyadenine		C <sub>5</sub> H <sub>5</sub> N <sub>5</sub> O <sub>2</sub>
Drug stones (magnesium trisilicate; ciprofloxacin; sulfa medications; triamterene; ephedrine, melamine; and indinavir)		
Foreign body calculi		

- Increased dietary ascorbic acid intake is associated with hyperoxaluria (LE:3, GR:A).
- A low animal protein diet should be encouraged to reduce the risk of stone formation (LE:2, GR:B).
- Dietary fiber content should be increased, and oxalate content should be restricted in recurrent calcium oxalate stone-forming cases (LE:4, GR:B).

## Commentary

The Nurses' Health Study in the USA found that the relative risk of stone formation in women in the highest quintile of calcium intake was 0.65 compared with those in the lowest quintile.<sup>33</sup> In a single randomized prospective study, hyperoxaluria was shown to be significantly associated with dietary ascorbic acid intake and inversely associated with calcium intake.<sup>32</sup> A low animal fat diet was reported to reduce stone recurrence rates.<sup>34</sup> Recent East Asian studies reported a decreased incidence of calcium-containing stones and increased incidence of uric acid stones in Korea,<sup>35</sup> and a decreased incidence of uric acid stones in Japan,<sup>11</sup> during a 20-year observation period.

### CQ 5. What is the role of genetic factors in urinary stone disease?

- Genetic factors are highly associated with both the pathogenesis and clinical outcomes of urinary stone disease. Clinicians should consider patients' genetic background, including family history (LE:3, GR:A).
- Positive family history of urinary stone disease is associated with earlier disease onset and a higher risk of recurrence (LE:3, GR:B).

- The association of gene mutations with disease development has been reported for both rare inherited disorders causing urolithiasis, as represented by cystine stones, and idiopathic calcium stones (LE:3).

#### Commentary

Patients with urinary stone disease have a higher prevalence of positive family history of the disease, which has been reported to be between 30–50%.<sup>36–40</sup> A family history of urolithiasis increases the relative risk of stone disease by 2.57-fold in men.<sup>41</sup> In addition, the concordance rate of the disease in monozygotic twins is higher compared with dizygotic twins (32.4 vs 17.3%; LE:3).<sup>42</sup>

Inherited metabolic disorders are often associated with pediatric urolithiasis cases.<sup>43</sup> Adenine phosphoribosyltransferase deficiency,<sup>44</sup> cystinuria,<sup>45–47</sup> xanthinuria,<sup>48</sup> Dent disease,<sup>49,50</sup> familial hypomagnesemia with hypercalciuria and nephrocalcinosis,<sup>51,52</sup> and primary hyperoxaluria<sup>53–55</sup> cause urinary supersaturation of insoluble mineral salts, which can inevitably increase the risk of kidney stone formation (LE:4).

In addition, a large number of reports in the literature have focused on the association of gene single-nucleotide polymorphism/mutations with idiopathic calcium stone development (LE:3).<sup>56</sup>

#### CQ 6. What is the role of regional or ethnic differences in urinary stone disease?

- There is a clear geographic variation in stone incidence worldwide (LE:3).
- The “stone belt” (areas where stones are frequent) includes South-East Asia and West Asia (LE:2).
- Ethnic differences in the incidence of stone disease have been observed (LE:3).

#### Commentary

The prevalence of urinary stone disease varies widely in different regions of the world, and depends greatly on the geographic area, racial distribution, socioeconomic status and dietary habits. The geographic distribution of stone disease tends to roughly follow that of environmental risk factors. Comparison of the accurate prevalence of the disease is difficult because of the differences in the evaluation methodology used.<sup>57</sup>

Racial differences in the incidence of stone disease have also been observed.<sup>58</sup> According to the NHANES dataset, Hispanic (OR 0.60,  $P < 0.001$ ) and black non-Hispanic people (OR 0.37,  $P < 0.001$ ) were significantly less likely to report a history of stone disease compared with white non-Hispanic people.<sup>59</sup> A Canadian study reported that the relative risk of calcium nephrolithiasis was higher in individuals of Arabic, West Indian and Asian descent, but lower in those of East Asian descent than in those of European and Latin American descent.<sup>60</sup>

#### CQ 7. What is the role of seasonal variation in urinary stone disease?

- Seasonal variations are related to urinary calculi pain attacks (LE:3).
- It has been suggested that there is an association between the rise of the ambient temperature and the occurrence of urolithiasis (LE:3).
- Seasonal variation in stone disease is likely related to temperature by way of fluid losses from perspiration and by sunlight-induced increases in vitamin D (LE:2).

#### Commentary

A close relationship between seasons and the incidence of ureterolithiasis has been shown in various geographical areas.<sup>61–67</sup> Seasonal trends in monthly urinary stone attack rates exist, with the incidence peaking in the summer, which is likely related to the high temperature that leads to fluid losses due to perspiration,<sup>68,69</sup> and perhaps by sunlight-induced increases in the synthesis of 1,25-dihydroxyvitamin D<sub>3</sub> (vitamin D).<sup>65,70</sup> The tendency for increasing incidence of renal colic in parallel with the rise in ambient temperature has been well documented in many countries.<sup>65,71</sup> Conversely, other studies have shown that the prevalence of urolithiasis is not related to season in Northern Europe and Western Australia, where the climate is stable.<sup>72–74</sup>

#### Diagnosis

##### CQ 8. What basic clinical work-up is necessary for the diagnosis of urinary stone disease?

- Urine routine and microscopic investigations (red blood and white blood cell counts, nitrites, urinary pH and culture, and sensitivity tests (LE:3, GR:B).
- Blood samples for total and differential counts, serum urea, creatinine, Na and K are investigated in first-time stone-former patients (LE:3, GR:B).
- If the patient is a recurrent stone former, then stone analysis, serum (ionized) calcium, phosphorus, uric acid, magnesium, as well as urinary calcium, phosphate, uric acid, magnesium, citrates and cystine levels are investigated at least once (LE:3, GR:B).

#### Commentary

If an intervention is planned, then PT, INR and blood group testing should be carried out. All retrieved fragments or collected stone material in voided urine should be examined by X-ray diffraction or infrared spectroscopy methods. Stone analysis should be carried out in recurrent stone formers during each stone episode, even if the initial stone composition is known, as changes in stone content have been reported in recurrent stone formers.<sup>75–79</sup>

##### CQ 9. What is the recommended imaging modality for the diagnosis of stone disease?

- Plain radiography is not sensitive and specific enough for the diagnosis of stone (LE:4, GR:B).
- US is the recommended choice of diagnosis for most renal stones and ureteric stones, particularly in children (LE:4, GR:B).
- NCCT has the best sensitivity and specificity for the detection of renal stones, and would be superior to US, in particular for ureteric stones. However, risks of radiation exposure should be considered (LE:4, GR:B).
- If possible, a low-dose NCCT protocol should be used for patients with BMI  $< 30 \text{ kg/m}^2$ , to minimize radiation risk to patients (LE:4, GR:B).

#### Commentary

The accuracy of KUB for the diagnosis of urinary stones is low, approximately 80–90% of stones are radiopaque, in particular during diagnostic settings (LE:4, GR:B).<sup>80,81</sup>

US has the advantage of being radiation-free, contrast-free and readily available; however, the sensitivity/specificity for diagnosing ureteric stones is low (LE:4, GR:B).<sup>80</sup>

NCCT has high sensitivity and specificity for the detection of both renal and ureteric stones (LE:4, GR:B).<sup>82,83</sup> As radiation exposure is a main concern, low-dose NCCT (with doses <4 mSv) is recommended for the detection of ureteric stones in patients with BMI <30 kg/m<sup>2</sup>.<sup>82</sup> A study funded by the Agency for Healthcare Research and Quality suggested the use of US during the initial assessment of acute loin/abdominal pain suggestive of renal calculi, avoiding carrying out a CT scan in some patients and hence resulting in less overall radiation exposure than NCCT for all patients (LE:2, GR:A).<sup>84</sup>

#### **CQ 10. Is an interview necessary for the diagnosis of stone disease?**

- Medical history is very important to diagnose stone disease. Physicians should ask detailed questions regarding symptoms, including pain, nausea/vomiting, urine color, discomfort on urination and previous stone episodes (LE:1, GR:A).
- Obtaining information on habitual behavior regarding diet and physical activity, family history, age of onset, and previous stone episodes are also helpful to predict the risk and recurrence of stones (LE:1, GR:A).

#### **Commentary**

Although 70% of patients have asymptomatic stones on US, hematuria, flank/abdominal pains, prior stone episodes, nausea and vomiting are common signs to suspect stone existence (LE:1, GR:A).<sup>85,86</sup> In addition, habitual behavior, including a larger amount of diet and alcohol consumption, positive family history, and less physical activity, is associated with the risk for urinary stone disease (LE:3, GR:A).<sup>30,37,87–90</sup> Positive family history, younger age at onset and having two or more previous stone episodes increase the prevalence of stone recurrence (LE:1, GR:A).<sup>37,90–92</sup>

#### **CQ 11. How should we diagnose urinary stones in specific situations, such as in children and pregnant patients?**

- In pregnant women, use US as a first-line imaging modality and MRI as a second-line approach (LE:2, GR:B).
- In pregnant women, reserve low-dose CT as a last-line option (LE:2, GR:B).
- In children, US is a first-line imaging modality, and low-dose CT is an alternative option if US cannot exclude urinary calculi (LE:2, GR:B).

#### **Commentary**

For the diagnosis of urinary stones in pregnant patients, major concerns are the effects of radiation exposure.<sup>93,94</sup> Table 3 shows the radiation doses absorbed by a fetus after common imaging modalities.<sup>91</sup> The physician has to justify the need for any investigation resulting in an absorbed dose to the fetus of >0.5 mGy.<sup>93</sup>

US is the initial imaging modality for pregnant patients suspected of renal colic;<sup>93,94</sup> however, it has inherent disadvantages, such as operator dependency and the difficulty in differentiation between physiological hydronephrosis of pregnancy and acute ureteral obstruction.<sup>95</sup> Transvaginal US has also been shown to improve sensitivity in the diagnosis of distal ureteral stones.<sup>96</sup> MRI is used as a second-line procedure, to differentiate physiological from obstructive hydronephrosis during pregnancy.<sup>93,94,97</sup>

Low-dose CT for the detection of urinary stones during pregnancy has been associated with a higher positive

**Table 3** Radiation absorbed doses to the fetus for common imaging modalities

Modality	Fetal dose (mGy)	
	Mean	Maximum
Ultrasound	None	
MRI (<1.5 Tesla)	None	
KUB radiography	1.4	4.2
IVU	1.7	10
CT	8.0	49

predictive value (95.8%) compared with MRI (80%) and US (77%).<sup>98</sup> Cumulative and long-term effects of radiation exposure are again the major concerns for children; therefore, US is the initial imaging modality for children suspected of renal colic.<sup>99</sup> US has 70% sensitivity and 100% specificity for the detection of urinary stones in patients aged <18 years.<sup>100</sup>

#### **CQ 12. What type of imaging work-up is necessary before surgery?**

- Use of nomograms of NCCT results can predict the stone clearance rate, and therefore might guide optimal treatment options (LE:2, GR:B).
- CT scan is also useful for clinicians in the preoperative planning of PCNL by allowing the best and safest access for stone clearance (LE:4, GR:B).

#### **Commentary**

For SWL, factors affecting the SFR include stone density and skin-to-stone distance values (LE:4, GR:B).<sup>101</sup> The stone density can be measured using HU. Clinical algorithms for the prediction of upper ureteric stone and renal stones, such as the Triple D scoring system, have been developed to define the most appropriate cases for SWL application (LE:4, GR:B).<sup>102,103</sup> For PCNL, Okunov *et al.* developed a novel surgical classification system for kidney calculi, namely S.T.O.N.E. (LE:4, GR:B).<sup>104</sup> A nomogram was also developed by the CROES PCNL Study Group in 2013 to predict the SFR after PCNL, which showed an area under curve of 0.76 (LE:4, GR:B).<sup>105</sup> In Asia, the Modified S-ReSC Score was developed, which assigned a score of 1–9 based on the number of sites involved in the renal collecting system (LE:4, GR:B).<sup>106,107</sup> The use of NCCT can provide most information required for an appropriate and successful intervention. However, the use of contrast-enhanced CT is sometimes required (LE:4, GR:C1).<sup>108</sup>

#### **CQ 13. How can we determine renal function of each kidney?**

- Differential function of the kidneys can be attained by a radionuclide renal scan (LE:3, GR:B).
- A more invasive investigation of differential function includes determining the creatinine clearance of urine obtained during percutaneous nephrostomy with or without self-void urine (LE:5, GR:C).
- Use of US or NCCT for the assessment of cortical thickness or cortical volume of the kidneys for the prediction of differential kidney function has also been described (LE:4, GR:C).

#### **Commentary**

The least invasive method for determining differential function is the use of radionuclide renal scan.<sup>109</sup> However, in

patients with ureteral stones causing hydronephrosis, there is a concern that the estimated differential function by conventional nuclear scan might not be accurate and requires conjugate views for accurate evaluation (LE:4, GR:B).<sup>110</sup> Alternatively, more invasive methods include the use of creatinine clearance from urine collected from percutaneous nephrostomy, compared with urine collected from contralateral percutaneous nephrostomy or self-voided urine (LE:5, GR:C). Carrying out cortical thickness or parenchymal volumetric measurement by using US or NCCT could help provide a reasonable prediction of the differential creatinine clearance in obstructed kidneys (LE:4, GR:C1).<sup>111</sup>

## Metabolic evaluation

### CQ 14. Is metabolic evaluation necessary for stone disease patients?

- Basic evaluation with serum chemistry and urinary analysis is recommended for all patients presenting with stones (LE:4, GR:B).
- Metabolic evaluation including 24-h urine collection is recommended for patients at high risk of stone recurrence or formation (LE:4, GR:B).

#### Commentary

Metabolic evaluation of stone disease can reveal abnormalities, which are amenable to medical treatment. In recurrent stone formers, metabolic evaluation, including serum mineral, parathormone and 24-h urine chemistry, showed significant serum and urinary abnormalities in contrast to first-time stone formers in an observational study.<sup>112</sup> Medical treatment of stone disease has been shown to reduce the risk of stone recurrence in a meta-analysis of RCTs (LE:4, GR:B).<sup>113</sup>

### CQ 15. Is it necessary to identify stone components?

- Stone analysis should be carried out for all first-time stone formers (LE:4, GR:C).
- Stone analysis should be repeated at every attack or intervention for patients with early stone recurrence after intervention, or late recurrence after a stone-free period (LE:3, GR:C).

#### Commentary

Stone analysis is an important part of the complete evaluation for a patient with stone disease. For example, calcium oxalate monohydrate stones can be associated with intermittent hyperoxaluria from high oxalate intake, decreased diuresis or inherited diseases, such as primary hyperoxaluria.<sup>114</sup> For patients with recurrent stone disease, the stone composition might change over time, which can impact on the efficacy of preventive treatments.<sup>78</sup>

### CQ 16. Are biochemical tests by 24-h urine necessary? And when?

- Twenty-four hour urine tests are recommended for patients deemed at high risk of stone formation (LE:3, GR:B).
- Two separate 24-h collections should be carried out for a complete biochemical work-up (LE:4, GR:B).
- Collection of samples should be carried out for patients who have been stone-free for at least 20 days (LE:4, GR:B).
- Repeat evaluation is recommended for patients on pharmacological treatment for recurrence (LE:4, GR:B).

## Commentary

The list of characteristics that classify a patient as a high-risk stone former is extensive.<sup>115</sup> High-risk stone formers should be counseled for 24-h urine evaluation including pH, minerals, oxalate, citrate and amino acids, as the results can guide medical prevention.<sup>116,117</sup> Spot urine tests have been used as an alternative for patients who are not willing or unable to carry out 24-h urine collection.<sup>118</sup> There is limited evidence for the timing of repeat urine collections, but most consensus recommend a repeat collection at 8–12 weeks after commencement of pharmacological therapy. Repeat urine analysis allows titration of drug doses as necessary.<sup>119</sup>

## Medical management

### CQ 17. What is the recommended treatment for ureter stone pain management?

- Use NSAIDs to control the colic pain (LE:2, GR:A).
- Use alpha1-blockers (e.g. tamsulosin) as a treatment option for distal ureteral stones of >5 mm in size (LE:1, GR:A).

#### Commentary

NSAIDs are effective for patients with acute stone colic, and have better analgesic efficacy than opioids (LE:3).<sup>120,121</sup> Intramuscular NSAIDs offer the most effective sustained analgesia for renal colic, and seem to have fewer side-effects (LE:2).<sup>122</sup> For patients with ureteral stones that are expected to pass spontaneously, NSAID tablets or suppositories (e.g. diclofenac sodium, 100–150 mg/day, 3–10 days) might help reduce inflammation and the risk of recurrent pain (LE:1).<sup>123,124</sup>

MET refers to the administration of drugs (e.g. tamsulosin or nifedipine) that expedite the passage of the stone without the need for surgical intervention.<sup>125,126</sup> Meta-analysis studies have clearly shown that patients with ureteral stones treated with alpha1-blockers can reduce the number of pain episodes, the need for analgesic medication (diclofenac) and hospitalization (LE:1).<sup>127</sup> Administration of tamsulosin and nifedipine in MET was determined to be safe and effective for distal ureteric stones with renal colic; tamsulosin was significantly better than nifedipine in relieving renal colic and facilitating ureteric stone expulsion (LE:1).<sup>128,129</sup>

### CQ 18. What promotes spontaneous passage of urinary stone?

- Small stones (ureteral stones of <10 mm in size) are highly likely to pass spontaneously (LE:2, GR:A).
- Stone location at the lower ureter with no obstruction (LE:4, GR:B).
- Anti-inflammatory drugs. Inflammatory changes in the ureter provoke a reduction in the rate of spontaneous passage of urinary stones; therefore, anti-inflammatory drugs, such as NSAIDs and steroids, are generally considered to increase spontaneous passage of urinary stone rates (LE:4, GR:B).
- Alpha1-blockers have been recommended for muscle relaxation of the lower ureter and to promote spontaneous ureter stone passage (LE:1, GR:A).
- Use of external physical vibration lithecbole is a treatment option (LE:1, GR:B).

### Commentary

Tamsulosin significantly facilitated the passage of distal ureteral stones in patients with well-controlled pain, no infections, abnormal anatomy, renal insufficiency or high-grade obstruction (LE:1).<sup>129</sup> No improvement in stone passage rates was observed in patients with  $\leq 5$ -mm distal ureteral stones treated with tamsulosin (LE:1).<sup>129</sup> While one RCT does not recommend the use of tamsulosin for symptomatic stones  $< 9$  mm,<sup>130</sup> a similar result was shown by another RCT trial.<sup>131–133</sup> However, several well-designed, randomized, double-blind, placebo-controlled studies have recently produced contradictory results, showing no overall benefit of MET.<sup>131–135</sup> Only the subgroup analysis for stones of 5–10 mm showed a higher passage rate in the tamsulosin group, by relaxing ureteral smooth muscle and decreasing the ureteral wall tone (LE:1).<sup>136,137</sup>

Low NLR ( $< 2.3$ ) might predict spontaneous stone passage in patients with ureter stones  $< 10$  mm in size, suggesting that ureteral inflammation plays an important role in stone passage (LE:4).<sup>131</sup> External physical vibration lithocolic was found to be efficacious in assisting the discharge of lower pole renal stone fragments, and can be used as an adjunctive method of minimally invasive stone treatment (LE:1–3).<sup>138–142</sup>

#### CQ 19. What is the role of medical chemolysis in uric acid stone?

- Uric acid stones can be dissolved by medical chemolysis using oral alkaline citrate or sodium bicarbonate through alkalinization of urine (LE:2, GR:A).

### Commentary

Urinary concentration of uric acid depends on urine pH, urine volume and excretion of uric acid. Urinary pH is the most important factor in uric acid solubility.<sup>143</sup> Oral alkaline citrate or sodium bicarbonate is used for chemolysis through alkalinization of the urine.<sup>144</sup> Although the efficiency of chemolysis is directly proportional to higher pH, the pH should be adjusted in the range of 7.0–7.2 to prevent formation of calcium phosphate calculus.

#### CQ 20. What medical treatment is appropriate for pyelonephritis accompanying urinary stone?

- Active antibiotic treatment and timely drainage of kidney if necessary (LE:1, GR:A).
- Percutaneous nephrostomy and ureteral catheter insertion (LE:2, GR:A).
- Nephrectomy is advocated as the treatment of choice for a kidney that has lost most of its function and the contralateral kidney is normal (LE:1, GR:A).
- Remove and cure of the lithiasis after the treatment of UTI, which is the main etiological factor in this pathology (LE:1, GR:A).

### Commentary

The treatment approaches of pyelonephrosis accompanying urinary stone should be individualized based on the age, general condition of the patient and patient compliance (LE:1).<sup>145</sup> Retrograde ureteral catheterization is appropriate for drainage of hydronephrosis (LE:2).<sup>146</sup> In addition, percutaneous nephrostomy provides a means of draining off pus and determining possible residual renal function.<sup>146</sup> If carried out properly, percutaneous drainage is a fast, reliable, and quickly effective therapeutic method in one session (LE:1).<sup>147</sup> The combination

of medical management and percutaneous drainage decreased the mortality rate of obstructive emphysematous pyelonephritis to 13.5%, compared with 50% with medical management alone.<sup>148</sup> Nephrectomy is advocated as a treatment option in the case of a damaged kidney, which seems difficult to be preserved by conservative and endourological treatment, with a normally functioning contralateral kidney (LE:3, LE:1).<sup>149,150</sup> The best treatment consists of the removal and cure of the lithiasis, which is the main etiological factor in this pathology (LE:2).<sup>146</sup>

## Surgical management

#### CQ 21. When can SWL be the first option for patients with renal stones?

- While SWL is an option for most renal stones, it should not be applied to patients who are contraindicated for SWL or have abnormal renal anatomy, such as caliceal diverticulum and so on (LE:5, GR:A).
- For renal stones  $< 20$  mm, SWL is a recommended first-line treatment for patients (LE:3, GR:A).
- For stones  $> 20$  mm or for renal stones presenting less favorable factors, such as high mean stone density or located in calices with poor anatomy, the treatment outcome will be less favorable. Therefore, the pros and cons of each treatment modality should be discussed in detail with the patient before a joint decision on treatment plan can then be taken (LE:5, GR:B).
- SWL is highly effective in pediatric cases due to its non-invasive nature and higher SFRs compared with adults (LE:2, GR:B).

### Commentary

SWL might be considered as the first treatment option for the index patient who has no contraindication for SWL, with stones sized  $< 20$  mm in general<sup>151</sup> or  $< 10$  mm for lower caliceal stones with favorable anatomy and composition (non-cystine, non-calcium monohydrate stone or stone CT HU  $< 1000$ ; LE:4).<sup>100,101,152</sup> For a patient with contraindication for SWL, abnormal body habitus, hard stone or unfavorable renal anatomy, other treatment options should be considered.

#### CQ 22. What are the complications of SWL?

- In general, the incidence of complications of SWL is low, and the majority are clinically not severe (LE:4, GR:B).
- The most severe complication, symptomatic hematoma, is detected in  $< 1\%$  of cases (LE:4, GR:B).
- There is no evidence suggesting SWL has long-term side-effects for patients (LE:4, GR:B).

### Commentary

The incidence of complications after SWL is low and most are mild (LE:4, GR:B).<sup>153–155</sup> Complications of SWL can be divided into three types: intraprocedure,<sup>150</sup> early complications<sup>156,157</sup> and long-term complications (Table 4).<sup>158,159</sup> Major contraindications are pregnancy, uncontrolled UTI and/or coagulation disorders, and the presence of an aortic or renal aneurysm.<sup>160</sup>

#### CQ 23. What are the complications of lithotripsy by URS?

- The overall complication rate after URS is 9–25%. Most complications are minor and do not require intervention (LE:1, GR:A).

**Table 4** Common complications after SWL

Complications	EAU guidelines	Sun and Zhang (Chinese group) <sup>154</sup>	Jagtap <i>et al.</i> (Indian group) <sup>155</sup>
		(LE:4)	(LE:4)
<b>Intraprocedure</b>			
Dysrhythmia	11–59%	–	–
<b>Early complications</b>			
Hematoma (symptomatic)	<1%	–	0.48%
Hematoma (asymptomatic)	4–19%	–	–
Renal colic	2–4%	1.3–3.7%	1.02%
Steinstrasse	4–7%	–	1.96%
Sepsis	1–2.7%	4.0–7.4%	2.05%
<b>Long-term complications</b>			
Regrowth of residual fragments	21–59%	–	–

- The following complications are the most relevant (Table 5): sepsis; ureteral stricture; ureteral injury; and UTI.
- Serious complications, including death and loss of kidney, were sufficiently rare that data were not available to estimate their rates of occurrence (LE:1, GR:A).

**Commentary**

The overall complication rate after URS is 9–25%.<sup>161</sup> The most relevant intraoperative and postoperative complications are sepsis, ureteral stricture, ureteral injury and UTI. Ureteral avulsion and strictures are rare (<1%). Previous perforations are the most important risk factors for complications (LE:1, GR:A).

**CQ 24. What are the complications of PCNL?**

- The complication rate of PCNL was reported to range from 10% to 20%, and most of the complications were not severe (LE:1, GR:A).
- The most common postoperative complications associated with PCNL are fever and bleeding, and urinary leakage (LE:1, GR:B).
- The complication rates of standard PCNL and minimally invasive PCNL were reported to be 15.9% and 12.8%, respectively. Minimally invasive PCNL is at least as efficacious and safe as standard PCNL (LE:1, GR:A).

**Commentary**

The complication rate of standard PCNL was reported to be 15.9%, whereas that of minimally invasive PCNL was reported to be 12.8% (LE:1).<sup>162,163</sup> The complication rate of PCNL improved from 21.3% between 1997 and 2005 to 10.3% between 2006 and 2014 (LE:3).<sup>164</sup> The most common postoperative complications associated with PCNL are fever and bleeding, urinary leakage, and problems due to residual stones (LE:1; Table 6).<sup>165</sup> Clavien 1, 2, 3, 4 and 5 complications were observed in 88.1%, 7%, 4.1%, 0.6% and 0.04% of cases, respectively.<sup>165</sup> One RCT has compared ECIRS with minimally invasive PCNL, and showed that no significant difference in perioperative complications including blood transfusion was observed between the two groups ( $P = 0.409$ ; LE:2).<sup>166</sup>

**Table 5** Common complications with URS compared with SWL

	SWL		URS	
	Groups/ patients	Median/ 95% CI	Groups/ patients	Median/ 95% CI
<b>Distal ureter</b>				
Sepsis	6	3%	7	2%
	2019	2–5%	1954	1–4%
Ureteral stricture	2	0%	16	1%
	609	0–1%	1911	1–2%
Ureteral injury	1	1%	23	3%
	45	0–5%	4529	3–4%
UTI	3	4%	3	4%
	87	1–12%	458	2–7%
<b>Mid ureter</b>				
Sepsis	2	5%	4	4%
	398	0–20%	199	1–11%
Ureteral stricture	1	1%	7	4%
	43	0–6%	326	2–7%
Ureteral injury			10	6%
			514	3–8%
UTI	1	6%	1	2%
	37	1–16%	63	0–7%
<b>Proximal ureter</b>				
Sepsis	5	3%	8	4%
	704	2–4%	360	2–6%
Ureteral stricture	2	2%	8	2%
	124	0–8%	987	1–5%
Ureteral injury	2	2%	10	6%
	124	0–8%	1005	3–9%
UTI	5	4%	2	4%
	360	2–7%	224	1–8%

**Table 6** Perioperative complications of percutaneous nephrolithotomy

Complication	Frequency (%)	Range
Fever	10.8	0–32.1
Transfusion	7	0–20
Thoracic complications	1.5	0–11.6
Sepsis	0.5	0.3–1.1
Embolization	0.4	0–1.5
Organ injury	0.4	0–1.7
Urinoma	0.2	0–1
Death	0.05	0–0.3
Total $n = 11\ 929$ .		

**CQ 25. What situation(s) require(s) open/laparoscopic/robotic-assisted stone surgery?**

- Although endoscopic management is a standard approach for most stone removal surgery, open/laparoscopic/robotic-assisted surgery might be alternatives in selected situations, such as stones requiring complete removal within a single session (infection stones) or stones with urinary tract anatomical abnormalities requiring simultaneous reconstruction (LE:5, GR:C1).

## Commentary

For large stones or stones with complex configuration, open/laparoscopic/robotic-assisted surgery might clear all stone burden within a single session. Several reports showed the simplicity of the procedure and excellent outcomes resulting from laparoscopic pyelolithotomy with or without concomitant pyeloplasty.<sup>167,168</sup> Both the transperitoneal and retroperitoneal approach resulted in similar SFRs.<sup>169</sup> Laparoscopic management of symptomatic caliceal diverticular stone is effective in diverticula with thin overlying renal parenchyma or anterior lesions inaccessible by endourological techniques.<sup>170</sup> Laparoscopic anatomic nephrolithotomy can be carried out selectively in large staghorn stones requiring complete removal in a single surgical session.<sup>171</sup> Finally, laparoscopic ureterolithotomy might be an alternative for impacted large proximal ureteral stones.<sup>172</sup>

### CQ 26. What urinary stones are eligible for ECIRS?

- Possible indications requiring combined approaches to the kidney or ureter (LE:2, GR:B):
  - large and complex stones;
  - large renal and concomitant ureteral stones or strictures;
  - ipsilateral medium-to-large renal stones and contralateral small renal stones;
  - diverticular stones with a difficult angle to the infundibulum or a narrow infundibulum;
  - difficulty of angle to approach from the calyx of the percutaneous puncture to other calyces to avoid multiple tracts;
  - impacted UPJ stones with complete obstruction; and ureteral strictures that require an antegrade incisional procedure.

### Commentary

The retrograde approach using a flexible ureteroscope has shown good surgical outcomes. However, the antegrade approach using a flexible ureteroscope or nephroscope can

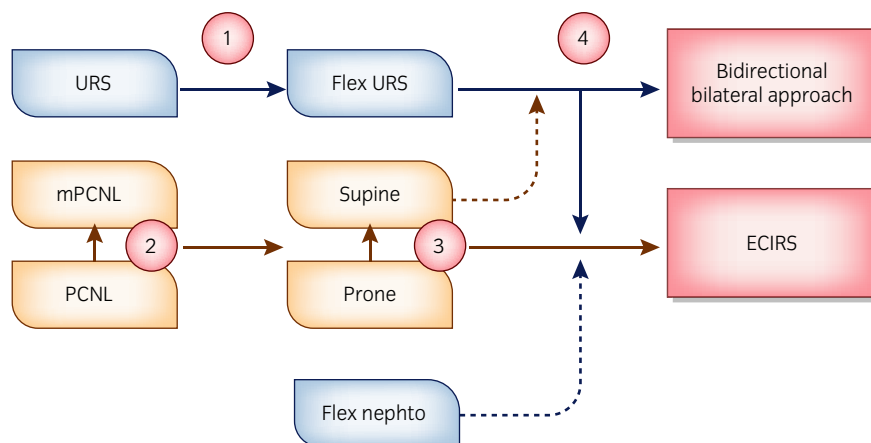
increase the SFRs in cases of acute infundibulopelvic angle or narrow infundibulum, musculoskeletal deformities, or anatomical abnormalities (LE:2).<sup>166,173–175</sup> ECIRS can be carried out in either the supine or prone position. However, there has been no randomized controlled study examining the patients' position (LE:4).<sup>173,176,177</sup> ECIRS contains two different concepts of location (bidirectional) and time (simultaneous; Fig. 1).<sup>176,178</sup> Selection of the combined bidirectional or simultaneous bidirectional approach depends on the location and size of the renal stones (Fig. 2).

### CQ 27. What urinary stones are eligible for miniaturized PCNL?

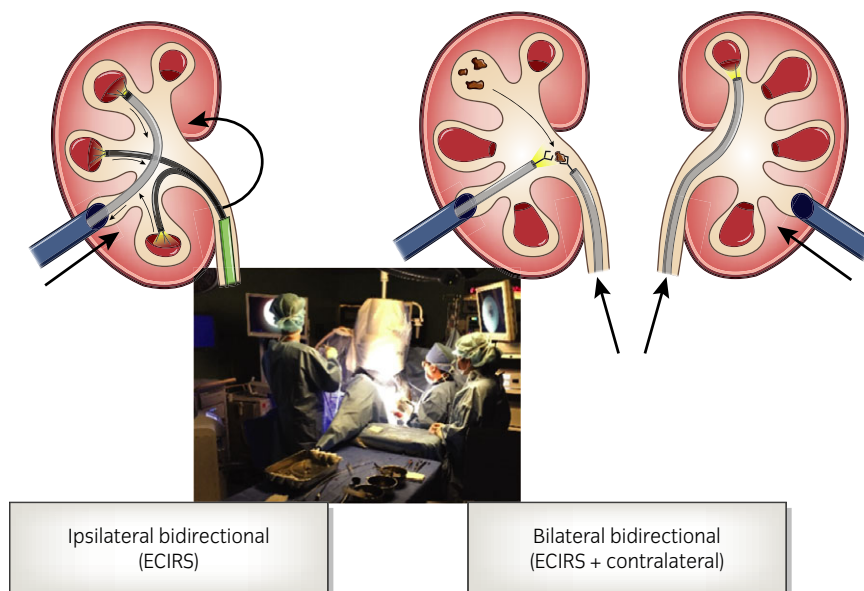
- Miniaturized PCNL can be recommended to treat medium-sized renal stones with promising good surgical outcomes with comparable SFRs and reduced risk of morbidity (LE:1, GR:B).

### Commentary

The acceptable criteria on stone burden of the miniaturized PCNL has been medium-sized renal stones <3.0–3.5 cm, and ultraminiperc or microperc might be suitable for stones <1.5 cm.<sup>179–182</sup> Miniaturized PCNL can be considered when there are diverticular stones, and pediatric medium-sized stones as well (LE:4).<sup>179,180,183</sup> Miniaturized PCNL has shown comparable surgical outcomes to conventional PCNL in terms of SFRs with lower probability of complications;<sup>184,185</sup> however, it seems to have longer operative times and higher intrarenal pressure than conventional PCNL during surgery.<sup>186,187</sup> The surgical outcomes of miniaturized PCNL are promising, with good SFRs, shorter hospital stay and reduced risk of morbidity, such as bleeding, adjacent organ injury and so on (LE:1).<sup>186</sup> Miniaturized PCNL and RIRS have similar indications for medium-sized renal stones <3 cm;<sup>188</sup> however, safety concerns regarding the higher bleeding risk, larger hemoglobin drop or longer hospital stay of miniaturized PCNL compared with RIRS arose (LE:1).<sup>189,190</sup>



**Fig. 1** Development of stone surgery in the era of flexible ureteroscopy. Numbers 1–4 represent the turning point where a surgeon needs to select a surgical option. (1) Rigid or semi-rigid ureteroscopic surgery was developed for flexible ureteroscopic surgery to remove renal stones. (2) The use of a miniaturized nephroscope became one of the good options for removal of large renal stones in conjunction with 30-Fr conventional percutaneous nephrolithotomy. (3) Percutaneous nephrolithotomy in the supine position is increasingly used. (4) The bidirectional approach with a flexible ureteroscope for bilateral renal stones became more common due to development of the procedure with device innovation. Furthermore, ECIRS using flexible ureteroscopes and percutaneous nephroscopes in a single session is gaining increasing attention worldwide.



**Fig. 2** Combined approach to removing stones simultaneously. Endoscopic intrarenal surgery can be considered using multiple approaches with a flexible scope in combination with a rigid nephroscope to remove renal stones in an ipsilateral kidney. Bilateral renal stones can be removed in a single session in some cases.

### CQ 28. What is the algorithm for treatment of adult patients with symptomatic renal stones?

- Considering its low stone-free rate for stones >15 mm, RIRS could be carried out for stones up to 20 mm in size (LE:2, GR:B).
- Although there is limited evidence about the choice of appropriate surgical approach for symptomatic renal stones, mini-PCNL with 14–20-Fr tracts is accumulating more evidence regarding the reliability and safety considerations (LE:1, GR:B).
- However, ultramini-, micro-PCNL, or the ancillary use of miniaturized nephroscopes and flexible ureteroreno- or nephroscopes has shown limited evidence based on observational or retrospective studies (LE:4, GR:C1).

#### Commentary

The summarized flow chart for treatment algorithm is shown in Figure 3.<sup>166,174–181,184,185,188,189,191–206</sup>

### CQ 29. What is an algorithm for treatment of adult patients with ureteral stones?

- Expectant management or MET might be considered for non-obstructing ureteral stones without complications (LE:1, GR:B).
- Once the surgery is indicated, URS or SWL are acceptable (LE:2, GR:B).

#### Commentary

The summarized flow chart for treatment algorithm is shown in Figure 4.<sup>135,207–214</sup>

### CQ 30. How can we manage urinary stones in specific situations, such as children and pregnant women?

- In pregnant patients with uncomplicated urinary stones, offer conservative management as a first-line therapy (LE:4, GR:B).
- URS has emerged as a preferred treatment for pregnant patients who failed conservative management (LE:2, GR:B).
- Placement of a ureteral stent or a percutaneous nephrostomy tube is an alternative option, with frequent stent or tube changes usually being necessary (LE:2, GR:C).

- In children with uncomplicated ureteral stones  $\leq 10$  mm, offer conservative management as a first-line therapy (LE:4, GR:B).
- Both SWL and URS are the treatments of choice for children with ureteral stones who are unlikely to pass the stones or who have failed conservative management (LE:2, GR:B).
- All three surgical modalities (SWL, URS, PCNL) are acceptable treatment options for children with renal stones (LE:2, GR:B).

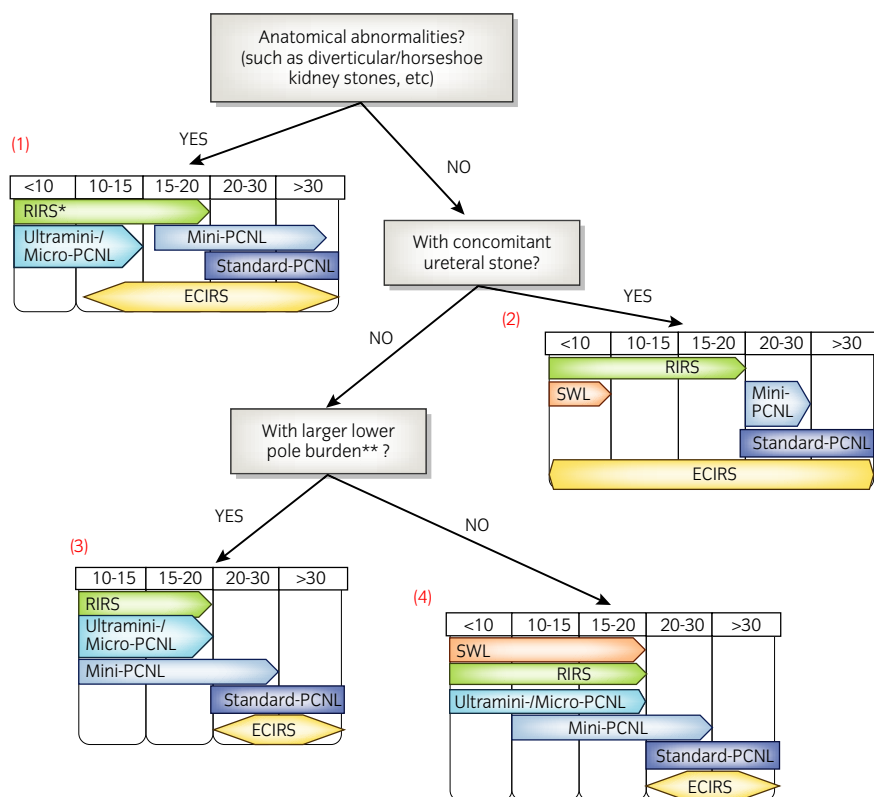
#### Commentary

The spontaneous stone passage rates for pregnant patients ranges from 48% to 84%.<sup>91</sup> NSAIDs are contraindicated in pregnancy. Frequent small doses of morphine can be used safely for severe pain, and acetaminophen for mild analgesia.<sup>93,94</sup> The use of MET for pregnant patients as “off-label” use remains debatable.<sup>94</sup> When clinical indications for intervention emerges, placement of a ureteral stent or percutaneous nephrostomy tube is an effective option;<sup>94,215,216</sup> however, URS has been identified as a reasonable alternative in these situations.<sup>217–219</sup> SWL is an absolute contraindication, and PCNL should be generally avoided.<sup>93,94</sup>

An initial trial of conservative management should be offered for children with uncomplicated ureteral stones, because spontaneous stone passage is expected in a significant proportion of children.<sup>99,220</sup> SWL provides more effective disintegration of large stones, and rapid and uncomplicated discharge of fragments compared with adult patients.<sup>221</sup> With the development of intracorporeal lithotripsy devices and smaller-caliber instruments, indications for URS and PCNL are similar to those for adult patients.<sup>222,223</sup>

### CQ 31. How should asymptomatic small renal stone be managed?

- Asymptomatic stones develop symptomatic events in 31.8–53.6% of patients within 5 years (LE:4).
- Clinicians can offer active surveillance for patients with asymptomatic renal stones due to their low probability for



**Fig. 3** Flow chart for treatment of adult patients with symptomatic renal stones. The first step in considering surgical intervention for renal stones is to confirm any anatomical abnormalities. (1) Horseshoe kidneys with calyceal diverticula usually have narrow and long infundibula, making SWL ineffective; therefore, either RIRS or PCNL should be considered, depending on the stone burden. In addition, miniaturized PCNL and ECIRS could be an option, depending on anatomical features. (2) A concomitant ureteral stone is more appropriately managed with a retrograde approach, using RIRS or ECIRS. Antegrade lithotripsy with mini- or standard-PCNL is also appropriate for a stone >20 mm. (3) Large lower pole stones measuring  $\leq 20$  mm should be treated with RIRS or miniaturized PCNL, and lower pole stones >20 mm should be treated with standard PCNL or ECIRS. SWL is less effective due to potential postprocedure complications and limited evidence for efficacy. (4) Small, simple renal stones are treatable with SWL, RIRS or miniaturized PCNL. Stones >20 mm should be treated using standard PCNL or ECIRS. \*There are some limitations/exceptions regarding the anatomical difficulties in approaching the stone with a flexible ureteroscope. \*\*Cases predominantly having lower caliceal stones >10 mm.

developing symptomatic events requiring interventions (LE:2, GR:C).

- Asymptomatic renal stones should be treated in situations of rapid growth and development of symptoms (LE:2, GR:A).

#### Commentary

A prior retrospective cohort study showed that 31.8% of asymptomatic stone patients developed symptomatic stone events in 31.6 months of mean study follow up.<sup>224</sup> Recent cohort studies reported that the development of symptomatic stone events were 53.6% for 31 months of mean follow up and 42% for 4.7 years of median follow up, respectively.<sup>225,226</sup> Studies suggested that larger stone size, in particular volume, and rapid increase in stone volume appeared to be predictive of future stone events in patients with asymptomatic stones (LE:4).<sup>227,228</sup> Some RCTs reported that observation of asymptomatic renal stone did not affect the patient's follow up compared with SWL or PCNL (LE:2).<sup>229,230</sup> A patient decision-based survey showed that 22.8% chose observation, which revealed that the patients who had passed larger stones were less likely to choose observation over surgery (LE:4).<sup>231</sup>

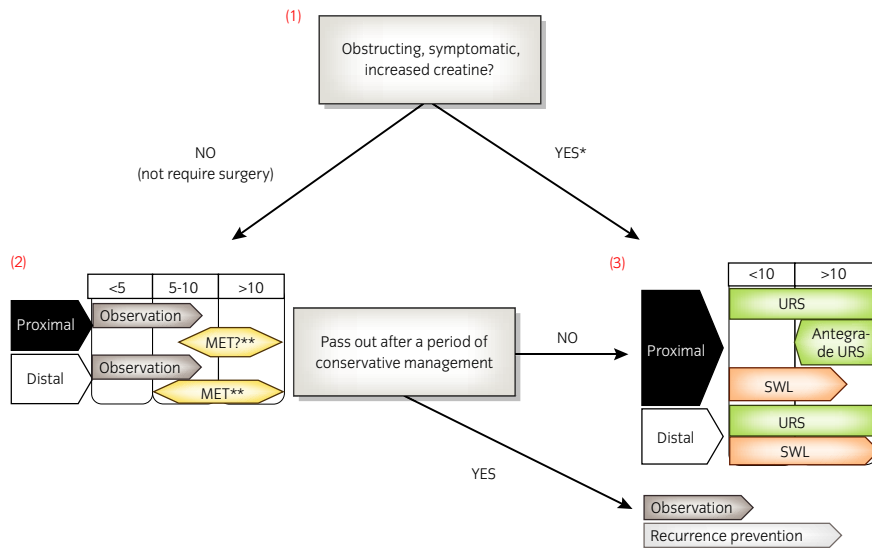
## Recurrence prevention

### CQ 32. Is hydration effective for stone prevention and how much fluid intake should be recommended?

- Hydration is clinically useful for secondary stone prevention by a urine dilutional effect. Urinary stone patients should be advised to achieve a goal of 2–2.5 L of urine daily (LE:2, GR:A).

#### Commentary

Increased fluid intake, which results in urine dilution, is a widely accepted measure to reduce recurrent stone formation.<sup>232,233</sup> An RCT has shown that stone formers who were assigned to increase fluid intake to achieve a urine volume  $\geq 2$  L/day had a significantly lower stone recurrence rate compared with controls (12% vs 27%,  $P = 0.008$ ).<sup>28</sup> In general, adequate hydration with a goal of at least 2–2.5 L of urine daily should be recommended. A non-invasive fluid tracker, a combination of a fluid tracking system and mobile health technology, has considerable potential to help urinary stone patients achieve high fluid intake.<sup>234</sup>



**Fig. 4** Flow chart for treatment of adult patients with ureteral stones. Stone-related and patient factors should be considered when treating adults with ureteral stones. (1) The first step is to verify whether the patient has an indication for active stone removal, including significant urinary obstruction, stone-related symptoms and progressive renal deterioration. (2) In the absence of an indication for active stone removal, close observation or MET should be offered. In general, small ureteral stones have a high probability of spontaneous passage, especially when located in the distal ureter. MET can be appropriate for distal ureteral stones >5 mm and proximal ureteral stones larger than 10 mm. (3) If active stone removal is clinically indicated, URS, using either a retrograde or antegrade approach, and SWL are usually considered. Proximal ureteral stones >10 mm can be treated with URS more efficiently than with SWL. \*These conditions might require ureteral stent insertion or percutaneous nephrostomy tube placement before removal of stones. \*\*A treating physician should consider early surgical intervention in parallel during the trial of medical treatment.

**CQ 33. What are the components that affect the risk of recurrence that are effective for prevention of stone disease?**

- Stone type and disease severity determine recurrent risk, including general factors, diseases associated with stone formation, genetically-determined stone formation, drug-induced stone formation, anatomical abnormalities associated with stone formation and environmental factors (LE:2, GR:B).
- Normalization of dietary habits with adequate fluid intake and a balanced diet, adequate physical activity, and maintenance of a normal BMI level are the main strategies for preventing stone disease (LE:1, GR:A).

**Commentary**

Stone type and disease severity determine a low or high risk of recurrence (Table 7).<sup>235-238</sup>

All stone formers, independent of their individual risk, should follow the suggested preventive measures, whose main focus is normalization of dietary habits and lifestyle risks (Table 8).<sup>239-244</sup> Stone formers at high risk require specific prophylaxis for recurrence,<sup>245,246</sup> which is usually pharmacological treatment based on stone analysis (Table 9).

**CQ 34. What foods are effective for preventing the recurrence of calcium stones?**

- A common-sense approach to diet should be taken; that is, a mixed balanced diet with contributions from all food groups, without any excesses. Fruit and vegetable intake are encouraged; oxalate-rich products, vitamin C and animal protein should be restricted; and excessive intake of calcium should be limited (LE:2, GR:B).

**Commentary**

The effect of fruit juices is mainly determined by the presence of citrate, bicarbonate and potassium.<sup>32,247-249</sup> Potassium increases both pH and citrate (LE:2, GR:B). Fruit and vegetable intake should be encouraged because of the beneficial effects of fiber, although the role of the latter in preventing stone recurrences is debatable (LE:1, GR:A).<sup>250-253</sup> Excessive intake of oxalate-rich products should be limited or avoided to prevent high oxalate load, particularly in patients who have high oxalate excretion (LE:3, GR:C).<sup>32</sup> As its role as a risk factor in calcium oxalate stone formation remains controversial,<sup>254</sup> avoiding excessive vitamin C intake seems wise for calcium oxalate stone formers (LE:3, GR:C).<sup>255</sup> Excessive consumption of animal protein has several effects that favor stone formation, including hypocitraturia, low urine pH, hyperoxaluria and hyperuricosuria, and should be limited to 0.8-1.0 g/kg body-weight (LE:1, GR:A).<sup>30,34</sup> Calcium intake should not be restricted unless there are strong reasons due to the inverse relationship between dietary calcium and stone formation (LE:1, GR:A).<sup>33,251</sup> Calcium supplements are not recommended except in enteric hyperoxaluria (LE:1, GR:A).<sup>34</sup> Calcium stone formation can be reduced by restricting sodium and animal protein (LE:1, GR:A).<sup>30,34,251,256</sup>

**CQ 35. Does salt intake increase the risk of urinary stones?**

- Clinicians should provide patients with calcium stones suitable information about restriction of sodium intake and the necessity of appropriate intake of dietary calcium of 1000-1200 mg per day (LE:2, GR:C1).

**Commentary**

Dietary salt – sodium chloride – is linked to calcium excretion in urine.<sup>257</sup> An RCT showed that a lower salt diet with a

**Table 7** Examples for high-risk stone formers

General factors	
Early onset of urolithiasis (especially children and teenagers)	
Familial stone formation	
Brushite-containing stones (CaHPO <sub>4</sub> ·2H <sub>2</sub> O)	
Uric acid- and urate-containing stones	
Infection stones	
Solitary kidney (the kidney itself does not particularly increase the risk of stone formation, but prevention of stone recurrence is of more importance)	
Diseases associated with stone formation	
Hyperparathyroidism	
Metabolic syndrome	
Nephrocalcinosis	
Polycystic kidney disease	
Gastrointestinal diseases (i.e. jejunio-ileal bypass, intestinal resection, Crohn's disease, malabsorption conditions, enteric hyperoxaluria after urinary diversion) and bariatric surgery	
Sarcoidosis	
Spinal cord injury, neurogenic bladder	
Genetically determined stone formation	
Cystinuria (type A, B and AB)	
Primary hyperoxaluria	
Renal tubular acidosis type I	
2,8-Dihydroxyadeninuria	
Xanthinuria	
Lesch-Nyhan syndrome	
Cystic fibrosis	
Drug-induced stone formation	
Anatomical abnormalities associated with stone formation	
Medullary sponge kidney (tubular ectasia)	
UPJ obstruction	
Caliceal diverticulum, caliceal cyst	
Ureteral stricture	
Vesico-uretero-renal reflux	
Horseshoe kidney	
Ureterocele	
Environmental factors	
Chronic lead exposure	

**Table 8** General preventive measures

Fluid intake (drinking recommendations)	Fluid amount: 2.5–3.0 L/day Circadian drinking Neutral pH beverages Diuresis: 2.0–2.5 L/day Specific weight of urine: <1010
Nutritional recommendations for a balanced diet	Balanced diet Rich in vegetables and fiber Normal calcium content: 1–1.2 g/day Limited NaCl content: 4–5 g/day Limited animal protein content: 0.8–1.0 g/kg/day
Lifestyle recommendations to normalize general risk factors	BMI: maintain a normal BMI level Adequate physical activity Balance of excessive fluid loss

target of  $\leq 100$  mEq (2300 mg) could reduce calcium excretion in urine for hypercalciuric stone formers (LE:2).<sup>34</sup> Previous interventional studies have reported a linear association

between salt intake and urinary calcium excretion.<sup>258,259</sup> Intake of high dietary salt diminishes the efficacy of reabsorption of sodium and water in renal proximal tubules, which prevents calcium reabsorption.<sup>260,261</sup> This hypercalciuric status might facilitate stone formation.<sup>262</sup>

#### **CQ 36. Does animal protein intake increase the risk of urinary stones?**

- Animal protein lowers urinary pH and increases uric acid in urine. Intake of excessive animal protein is one of the risk factors for excessive uric acid excretion and calcium stone formation (LE:1, GR:B).

#### **Commentary**

Previous clinical,<sup>34</sup> epidemiological<sup>256,263</sup> and metabolic<sup>264</sup> studies have suggested that excessive consumption of animal protein might induce stone formation (LE:4).<sup>256,264–266</sup> For patients with recurrent calcium oxalate stones, limited animal protein intake of 0.8–1.0 g/kg/day reduces stone formation (LE:1).<sup>30</sup>

#### **CQ 37. Does thiazide prevent urinary stones?**

- Clinicians might recommend thiazide medication with or without potassium citrate to patients with high or relatively high urinary calcium, as well as recurrent calcium stone formers without definite evidence of metabolic abnormalities (LE:1, GR:B).

#### **Commentary**

Thiazide reduces recurrent calcium stone formation by the hypocalciuric effect with once-daily use of 50 mg hydrochlorothiazide, 25 mg chlorthalidone and 2.5 mg indapamide (LE:1).<sup>34,267–271</sup> Potassium citrate or potassium chloride might be necessary to prevent hypokalemic effects induced by thiazide medication.

#### **CQ 38. Does citric acid prevent urinary stones?**

- Various citrus juices can be utilized to induce citraturia. However, whether this approach can reduce calcium stone recurrence is still under investigation (LE:4, GR:C1).

#### **Commentary**

Administration of citrate has been shown to benefit hypocitraturic stone formers.<sup>272</sup> Orange juice effectively induces citraturia due to its high concentration of potassium citrate.<sup>273</sup> Lemonade and lime juice show increased urinary citrate in some studies,<sup>274</sup> but not in others.<sup>275</sup> Grapefruit juice not only increases urinary citrate, but also increases oxalate excretion, so its protective effect is offset.<sup>276</sup>

#### **CQ 39. Does magnesium prevent urinary stones?**

- Magnesium inhibits calcium oxalate stone formation either *in vitro* or *in vivo*, and several studies have shown its protective effects based on urinary parameters. Most clinical trials utilizing magnesium in combination with other stone inhibitors showed promising results. However, magnesium as sole therapy is ineffective and is not recommended (LE:4, GR:D).

#### **Commentary**

Urinary magnesium complexes with oxalate, which reduces calcium oxalate supersaturation, inhibit the nucleation and growth of calcium oxalate crystals.<sup>277,278</sup> Furthermore, recent data have shown that its inhibitory effect synergizes with citrate and continues to be effective at an acidic pH environment.<sup>279</sup> Magnesium supplement in calcium stone formers

**Table 9** Pharmacological substances used for stone prevention: characteristics, specifics and dosage

Agent	Rationale	Dose	Specifics and side-effects	Stone type
Alkaline citrates	Alkalinization Hypocitraturia Inhibition of calcium oxalate crystallization	5–12 g/day (14–36 mmol/day) Children: 0.1–0.15 g/kg/day	Daily dose for alkalinization depends on urine pH	Calcium oxalate, uric acid cystine
Allopurinol	Hyperuricosuria Hyperuricemia	100–300 mg/day Children: 1–3 mg/kg/day	100 mg in isolated hyperuricosuria Renal insufficiency demands dose correction	Calcium oxalate, uric acid, ammonium urate, 2,8-dihydroxyadenine
Calcium Captopril	Enteric hyperoxaluria Cystinuria Active decrease of urinary cystine levels	1000 mg/day 75–150 mg	Intake 30 min before meals Second-line option due to significant side effects	Calcium oxalate Cystine
Febuxostat	Hyperuricosuria Hyperuricemia	80–120 mg/day	Acute gout contraindicated, pregnancy, xanthine stone formation	Calcium oxalate, uric acid
L-Methionine	Acidification	600–1500 mg/day	Hypercalciuria, bone demineralization, systemic acidosis No long-term therapy	Infection stones, ammonium urate, calcium phosphate
Magnesium	Isolated hypomagnesiuria Enteric hyperoxaluria	200–400 mg/day Children: 6 mg/kg/day	Renal insufficiency demands dose correction Diarrhea, chronic alkali losses, hypocitraturia	Calcium oxalate
Sodium bicarbonate	Alkalinization Hypocitraturia	4.5 g/day		Calcium oxalate, uric acid, cystine
Pyridoxine	Primary hyperoxaluria	Initial dose 5 mg/kg/day Maximum 20 mg/kg/day	Polyneuropathia	Calcium oxalate
Thiazide (hydrochlorothiazide)	Hypercalciuria	25–50 mg/day Children: 0.5–1 mg/kg/day	Risk for agent-induced hypotonic blood pressure, diabetes, hyperuricemia, hypokalemia, followed by intracellular acidosis and hypocitraturia	Calcium oxalate, calcium phosphate
Tiopronin	Cystinuria, active decrease of urinary cystine levels	Initial dose 250 mg/day Maximum 2000 mg/day	Risk for tachyphylaxis and proteinuria	Cystine

improved lithogenic biochemical parameters.<sup>280,281</sup> Clinical studies that utilized magnesium in combination with various stone inhibitors have shown favorable effects of magnesium over calcium stone formation,<sup>282,283</sup> including increased urinary citrate level and reduced stone recurrence.<sup>284</sup> One study compared the effectiveness of magnesium hydroxide with chlorthalidone in protection of recurrent calcium nephrolithiasis and found inferior results.<sup>267</sup> However, one cohort study of recurrent calcium stone formers reported that increased magnesium intake was significantly associated with decreased hyperoxaluria.<sup>285</sup>

#### CQ 40. What prevents uric acid stone formation?

- Hydration and urine alkalinization are the mainstays of uric acid stone prevention. The latter can be achieved either by diet manipulation or by pharmacotherapy using citrate supplementation (LE:4, GR:B).

#### Commentary

The main principles of uric acid stone medical therapy and prevention are aimed at increasing urine volume, urinary alkalinization and, less importantly, the reduction of uric acid excretion.<sup>286</sup> The exact amount of daily fluid to prevent uric acid stone remains unclear. However, a total of 2.5–3 L per day is generally recommended.<sup>287</sup> Urinary alkalinization can be achieved either by diet manipulation or pharmacotherapy

with the goal of urine pH >6.0.<sup>274</sup> Periodic monitoring of urine pH is mandatory, as hyperalkalinization of urine might lead to formation of calcium phosphate stones.<sup>288</sup>

#### CQ 41. What prevents cystine stones?

- In cystine stone formers, prevention with proper hydration and urine alkalinization is generally utilized as first-line prevention. If stone recurrence still occurs, second-line prevention with a cystine-binding agent is offered (LE:4, GR:B).

#### Commentary

As recurrent stone formation is frequently observed in cystinuria patients, medical prophylaxis is highly recommended.<sup>289</sup> Cystine is poorly soluble at urine pH <7.0, and stone formation occurs when urinary cystine concentration is >250 mg/dL.<sup>290</sup> Fluid intake should reach at least 4–5 L/day for adult patients to achieve a urinary cystine concentration <250 mg/dL.<sup>291</sup> In alkalinized urine, potassium citrate is usually prescribed to target urine pH of 7.0–7.5, if not contraindicated. If these two steps fail to prevent cystine stone recurrence, the next step is to add a cystine-binding agent, such as tiopronin or D-penicillamine.<sup>292,293</sup>

#### CQ 42. What prevents infectious stones?

- Fluid intake and diet is general recommended (LE:2, GR:B).

- Other treatments, such as short- or long-term antibiotic treatment, methionine or ammonium chloride, restricted intake of urease, or acetohydroxamic acid, might be considered for recurrent or severe infection (LE:1, GR:A).
- Phytolysin improves general clinical signs and laboratory parameters of blood and urine, and reduces the number of relapses of UTI and stone formation (LE:2, GR:B).

#### Commentary

General preventive measures are recommended for fluid intake and diet. Specific measures include complete surgical stone removal (LE:2, GR:B).<sup>294</sup> Short- or long-term antibiotic treatment,<sup>295</sup> urinary acidification using methionine (LE:2, GR:B),<sup>296</sup> or ammonium chloride (LE:2, GR:B),<sup>297</sup> and advice to restrict intake of urease (LE:1, GR:A).<sup>298,299</sup> For severe infections, acetohydroxamic acid might be an option (LE:1, GR:A).<sup>298,299</sup> Phytolysin leads to a decrease in the level of leukocyturia and bacteriuria, increases diuresis and urinary alkalization, and reduces the number relapses of UTI and stone formation (LE:2, GR:B).<sup>300</sup>

#### CQ 43. What is a useful imaging test for follow up of urinary stone recurrence?

- Plain radiography, nephrotomography, US, IVU and CT have all been used to evaluate residual fragments (LE:1, GR:A).
- The routine use of CT scan for follow-up studies should be carried out cautiously and only when necessary (LE:1, GR:A).
- Imaging plays a critical role in the initial diagnosis, follow up and urological management of urinary tract stone disease (LE:1, GR:A).

#### Commentary

A variety of imaging modalities are available to the practicing urologist, including KUB, IVU, US, magnetic resonance urography and CT scans, each with its advantages and limitations. Post-treatment imaging of stone patients is recommended to ensure complete fragmentation and stone clearance. Plain radiography is suggested for the follow up of radiopaque stones, with US and limited IVU reserved for the follow up of radiolucent stones to minimize cumulative radiation exposure from repeated CT scans. CT is a modality of choice for identifying residual stone burden after interventional procedures,<sup>301–304</sup> and has a definitive role in the follow up of stones that are lucent on conventional imaging.<sup>301,305</sup> Patients with asymptomatic caliceal stones who prefer an observational approach should have a yearly KUB to monitor the progression of stone burden (LE:2, GR:A).<sup>301,303,306</sup>

## Acknowledgments

We thank the following contributors for supporting this UAA guideline: Xiaofeng Guan (China), Yasuo Kohjimoto (Japan), Joseph KM Li (Hong Kong), Katsuhito Miyazawa (Japan), Dong Quy Le Nguyen (Korea), Zhiwei Tao (China), Xiang Wang (China) and Yuyi Yeow (Singapore). In addition, we thank Ms Angie See Beng Guek, Executive Secretary of the UAA Central Office, and the external reviewers, Professor Thomas Knoll from the European Association of Urology

and Professor Manoj Monga from the American Urological Association, for their kind suggestions.

## Conflict of interest

The Work Group consists of an international group of clinicians with specific expertise in this area. All experts involved in the production of this document have submitted declarations of potential conflict of interest. Individual statements can be viewed on the UAA website.

## References

- 1 OCEBM Levels of Evidence Working Group. Oxford Centre for Evidence-Based Medicine 2011 levels of evidence. [Cited 11 Apr 2019.] Available from URL: <https://www.cebm.net/index.aspx?o=5653>
- 2 Romero V, Akpınar H, Assimos DG. Kidney stones: a global picture of prevalence, incidence, and associated risk factors. *Rev. Urol.* 2010; **12**: e86–96.
- 3 Turney BW, Reynard JM, Noble JG, Keoghane SR. Trends in urological stone disease. *BJU Int.* 2012; **109**: 1082–7.
- 4 Sorokin I, Mamoulakis C, Miyazawa K, Rodgers A, Talati J, Lotan Y. Epidemiology of stone disease across the world. *World J. Urol.* 2017; **35**: 1301–20.
- 5 Scales CD Jr, Smith AC, Hanley JM, Saigal CS. Urologic diseases in America Project Prevalence of kidney stones in the United States. *Eur. Urol.* 2012; **62**: 160–5.
- 6 Stamatelou KK, Francis ME, Jones CA, Nyberg LM, Curhan GC. Time trends in reported prevalence of kidney stones in the United States: 1976–1994. *Kidney Int.* 2003; **63**: 1817–23.
- 7 Heers H, Turney BW. Trends in urological stone disease: a 5-year update of hospital episode statistics. *BJU Int.* 2016; **118**: 785–9.
- 8 Trinchieri A, Coppi F, Montanari E, Del Nero A, Zanetti G, Pisani E. Increase in the prevalence of symptomatic upper urinary tract stones during the last ten years. *Eur. Urol.* 2000; **37**: 23–5.
- 9 Hesse A, Brändle E, Wilbert D, Köhrmann KU, Alken P. Study on the prevalence and incidence of urolithiasis in Germany comparing the years 1979 vs 2000. *Eur. Urol.* 2003; **44**: 709–13.
- 10 Edvardsson VO, Indridason OS, Haraldsson G, Kjartansson O, Pálsson R. Temporal trends in the incidence of kidney stone disease. *Kidney Int.* 2013; **83**: 146–52.
- 11 Sakamoto S. Chronological changes in the epidemiological characteristics of upper urinary tract urolithiasis in Japan. *Int. J. Urol.* 2018; **25**: 373–8.
- 12 Bae SR, Seong JM, Kim LY *et al.* The epidemiology of reno-ureteral stone disease in Koreans: a nationwide population-based study. *Urolithiasis* 2014; **42**: 109–14.
- 13 Yang Y, Deng Y, Wang Y. Major geogenic factors controlling geo-graphical clustering of urolithiasis in China. *Sci. Total Environ.* 2016; **571**: 1164–71.
- 14 Lee MC, Bariol SV. Changes in upper urinary tract stone composition in Australia over the past 30 years. *BJU Int.* 2013; **112**(Suppl 2): 65–8.
- 15 Lewandowski S, Rodgers A, Schloss I. The influence of a high-oxalate/low-calcium diet on calcium oxalate renal stone risk factors in non-stone-forming black and white South African subjects. *BJU Int.* 2001; **87**: 307–11.
- 16 Knoll T, Schubert AB, Fahlenkamp D, Leusmann DB, Wendt-Nordahl G, Schubert G. Urolithiasis through the ages: data on more than 200,000 urinary stone analyses. *J. Urol.* 2011; **185**: 1304–11.
- 17 Kourambas J, Aslan P, Teh CL *et al.* Role of stone analysis in metabolic evaluation and medical treatment of nephrolithiasis. *J. Endourol.* 2001; **15**: 181–6.
- 18 Pak CY, Poindexter JR, Adams-Huet B *et al.* Predictive value of kidney stone composition in the detection of metabolic abnormalities. *Am. J. Med.* 2003; **115**: 26–32.
- 19 Ansari MS, Gupta NP, Hemal AK *et al.* Spectrum of stone composition: structural analysis of 1050 upper urinary tract calculi from northern India. *Int. J. Urol.* 2005; **12**: 12–6.
- 20 Wu W, Yang B, Ou L *et al.* Urinary stone analysis on 12,846 patients: a report from a single center in China. *Urolithiasis* 2014; **42**: 39–43.

- 21 Lieske JC, Rule AD, Krambeck AE *et al.* Stone composition as a function of age and sex. *Clin. J. Am. Soc. Nephrol.* 2014; **9**: 2141–6.
- 22 Al-Marhoon MS, Bayoumi R, Al-Farsi Y *et al.* Urinary stone composition in Oman: with high incidence of cystinuria. *Urolithiasis* 2015; **43**: 207–11.
- 23 Amir A, Matlaga BR, Ziemba JB, Sheikh S *et al.* Kidney stone composition in the Kingdom of Saudi Arabia. *Clin. Nephrol.* 2018; **89**: 345–8.
- 24 Moses R, Pais VM, Ursiny M *et al.* Changes in stone composition over two decades: evaluation of over 10,000 stone analyses. *Urolithiasis* 2015; **43**: 135–9.
- 25 Siener R, Glatz S, Nicolay C, Hesse A. The role of overweight and obesity in calcium oxalate stone formation. *Obes. Res.* 2004; **12**: 106–13.
- 26 Lee YC, Huang SP, Juan YS, Huang TY, Liu CC. Impact of metabolic syndrome and its components on kidney stone in aging Taiwanese males. *Aging Male* 2016; **19**: 197–201.
- 27 Kim JH, Doo SW, Cho KS *et al.* Which anthropometric measurements including visceral fat, subcutaneous fat, body mass index, and waist circumference could predict the urinary stone composition most? *BMC Urol.* 2015; **15**: 17.
- 28 Borghi L, Meschi T, Amato F, Briganti A, Novarini A, Giannini A. Urinary volume, water and recurrences in idiopathic calcium nephrolithiasis: a 5-year randomized prospective study. *J. Urol.* 1996; **155**: 839–43.
- 29 Sarica K, Inal Y, Erturhan S, Yagci F. The effect of calcium channel blockers on stone regrowth and recurrence after shock wave lithotripsy. *Urol. Res.* 2006; **34**: 184–9.
- 30 Fink HA, Akornor JW, Garimella PS *et al.* Diet, fluid, or supplements for secondary prevention of nephrolithiasis: a systematic review and meta-analysis of randomized trials. *Eur. Urol.* 2009; **56**: 72–80.
- 31 Shuster J, Jenkins A, Logan C *et al.* Soft drink consumption and urinary stone recurrence: a randomized prevention trial. *J. Clin. Epidemiol.* 1992; **45**: 911–6.
- 32 Siener R, Ebert D, Nicolay C, Hesse A. Dietary Risk factors for hyperoxaluria in calcium oxalate stone formers. *Kidney Int.* 2003; **63**: 1037–43.
- 33 Curhan GC, Willett WC, Speizer FE, Spiegelman D, Stampfer MJ. Comparison of dietary calcium with supplemental calcium and other nutrients as factors affecting the risk of kidney stones in women. *Ann. Intern. Med.* 1997; **126**: 497–504.
- 34 Borghi L, Schianchi T, Meschi T *et al.* Comparison of two diets for the prevention of recurrent stones in idiopathic hypercalciuria. *N. Engl. J. Med.* 2002; **346**: 77–84.
- 35 Kang HW, Seo SP, Ha YS *et al.* Chronological trends in clinical and urinary metabolic features over 20 years in Korean Urolithiasis Patients. *J. Korean Med. Sci.* 2001; **32**: 1496–501.
- 36 Dussol B, Verdier J-M, Le Goff J-M *et al.* Artificial neural networks for assessing the risk factors for urinary calcium stones according to gender and family history of stone. *Scand. J. Urol. Nephrol.* 2007; **41**: 414–8.
- 37 Basiri A, Shakhssalim N, Khoshdel AR *et al.* Familial relations and recurrence pattern in nephrolithiasis: new words about old subjects. *Urol. J.* 2010; **7**: 81–6.
- 38 Muslimanoglu AY, Binbay M, Yuruk E *et al.* Updated epidemiologic study of urolithiasis in Turkey I: Changing characteristics of urolithiasis. *Urol. Res.* 2011; **39**: 309–14.
- 39 Jabbar F, Asif M, Dutani H *et al.* Assessment of the role of general, biochemical and family history characteristics in kidney stone formation. *Saudi J. Biol. Sci.* 2015; **22**: 65–8.
- 40 Guerra A, Folesani G, Nouvenne A *et al.* Family history influences clinical course of idiopathic calcium nephrolithiasis: case-control study of a large cohort of Italian patients. *J. Nephrol.* 2016; **29**: 645–51.
- 41 Curhan GC, Willett WC, Rimm EB *et al.* Family history and risk of kidney stones. *J. Am. Soc. Nephrol.* 1997; **8**: 1568–73.
- 42 Goldfarb DS, Fischer ME, Keich Y *et al.* A twin study of genetic and dietary influences on nephrolithiasis: a report from the Vietnam Era Twin (VET) Registry. *Kidney Int.* 2005; **67**: 1053–61.
- 43 Edvardsson VO, Goldfarb DS, Lieske JC *et al.* Hereditary causes of kidney stones and chronic kidney disease. *Pediatr. Nephrol.* 2013; **28**: 1923–42.
- 44 Bollée G, Dollinger C, Boutaud L *et al.* Phenotype and genotype characterization of adenine phosphoribosyltransferase deficiency. *J. Am. Soc. Nephrol.* 2010; **21**: 679–88.
- 45 Yuen Y-P, Lam C-W, Lai C-K *et al.* Heterogeneous mutations in the SLC3A1 and SLC7A9 genes in Chinese patients with cystinuria. *Kidney Int.* 2006; **69**: 123–8.
- 46 Koulivand L, Mohammadi M, Ezatpour B *et al.* Mutation analysis of SLC3A1 and SLC7A9 genes in patients with cystinuria. *Urolithiasis* 2015; **43**: 447–53.
- 47 Kim JH, Park E, Hyun HS *et al.* Genotype and phenotype analysis in pediatric patients with cystinuria. *J. Korean Med. Sci.* 2017; **32**: 310–4.
- 48 Pais VM Jr, Lowe G, Lallas CD, Preminger GM, Assimos DG. Xanthine urolithiasis. *Urology* 2006; **67**: 1084.e9–11.
- 49 Sekine T, Komoda F, Miura K *et al.* Japanese Dent disease has a wider clinical spectrum than Dent disease in Europe/USA: genetic and clinical studies of 86 unrelated patients with low-molecular-weight proteinuria. *Nephrol. Dial. Transplant.* 2014; **29**: 376–84.
- 50 Blanchard A, Curis E, Guyon-Roger T *et al.* Observations of a large Dent disease cohort. *Kidney Int.* 2016; **90**: 430–9.
- 51 Weber S, Hoffmann K, Jeck N *et al.* Familial hypomagnesaemia with hypercalciuria and nephrocalcinosis maps to chromosome 3q27 and is associated with mutations in the PCLN-1 gene. *Eur. J. Hum. Genet.* 2000; **8**: 414–22.
- 52 Guran T, Akcay T, Bereket A *et al.* Clinical and molecular characterization of Turkish patients with familial hypomagnesaemia: novel mutations in TRPM6 and CLDN16 genes. *Nephrol. Dial. Transplant.* 2012; **27**: 667–73.
- 53 van Woerden CS, Groothoff JW, Wijburg FA *et al.* Clinical implications of mutation analysis in primary hyperoxaluria type 1. *Kidney Int.* 2004; **66**: 746–52.
- 54 Webster KE, Ferree PM, Holmes RP *et al.* Identification of missense, nonsense, and deletion mutations in the GRHPR gene in patients with primary hyperoxaluria type II (PH2). *Hum. Genet.* 2000; **107**: 176–85.
- 55 Monico CG, Rossetti S, Belostotsky R *et al.* Primary hyperoxaluria type III gene HOGA1 (formerly DHDSL) as a possible risk factor for idiopathic calcium oxalate urolithiasis. *Clin. J. Am. Soc. Nephrol.* 2011; **6**: 2289–95.
- 56 Taguchi K, Yasui T, Milliner DS *et al.* Genetic risk factors for idiopathic urolithiasis: a systematic review of the literature and causal network analysis. *Eur. Urol. Focus* 2017; **3**: 2–8.
- 57 Fisang C, Anding R, Müller SC, Latz S, Laube N. Urolithiasis—an interdisciplinary diagnostic, therapeutic and secondary preventive challenge. *Dtsch Arztebl Int* 2015; **112**: 83–91.
- 58 Scales CD Jr, Smith AC, Hanley JM, Saigal CS. Prevalence of kidney stones in the United States. *Eur. Urol.* 2012; **62**: 160–5.
- 59 Soucie JM, Thun MJ, Coates RJ, McClellan W, Austin H. Demographic and geographic variability of kidney stones in the United States. *Kidney Int.* 1994; **46**: 893–9.
- 60 Mente A, Honey RJ, McLaughlin JR, Bull SB, Logan AG. Ethnic differences in relative risk of idiopathic calcium nephrolithiasis in North America. *J. Urol.* 2007; **178**: 1992–7.
- 61 Fukuhara H, Ichiyanagi O, Kakizaki H, Naito S, Tsuchiya N. Clinical relevance of seasonal changes in the prevalence of ureterolithiasis in the diagnosis of renal colic. *Urolithiasis* 2016; **44**: 529–37.
- 62 Lin KJ, Lin PH, Chu SH *et al.* The impact of climate factors on the prevalence of urolithiasis in Northern Taiwan. *Biomed. J.* 2014; **37**: 24–30.
- 63 Basiri A, Shakhssalim N, Khoshdel AR, Naghavi M. Regional and seasonal variation in the incidence of urolithiasis in Iran: a place for obsession in case finding and statistical approach. *Urol. Res.* 2009; **37**: 197–204.
- 64 Park HK, Bae SR, Kim SE *et al.* The effect of climate variability on urinary stone attacks: increased incidence associated with temperature over 18°C: a population-based study. *Urolithiasis* 2015; **43**: 89–94.
- 65 Lo SS, Johnston R, Al Sameraai A, Metcalf PA, Rice ML, Masters JG. Seasonal variation in the acute presentation of urinary calculi over 8 years in Auckland, New Zealand. *BJU Int.* 2010; **106**: 96–101.
- 66 Alkhunaizi AM. Urinary stones in Eastern Saudi Arabia. *Urol. Ann.* 2016; **8**: 6–9.
- 67 Brikowski TH, Lotan Y, Pearle MS. Climate-related increase in the prevalence of urolithiasis in the United States. *Proc. Natl Acad. Sci. USA* 2008; **105**: 9841–6.
- 68 Boscolo-Berto R, Dal Moro F, Abate A, Arandjelovic G, Tosato F, Bassi P. Do weather conditions influence the onset of renal colic? A novel approach to analysis. *Urol. Int.* 2008; **80**: 19–25.
- 69 Borghi L, Guerra A, Meschi T *et al.* Relationship between supersaturation and calcium oxalate crystallization in normals and idiopathic calcium oxalate stone formers. *Kidney Int.* 1999; **55**: 1041–50.
- 70 Elomaa I, Karonen SL, Kairento AL, Pelkonen R. Seasonal variation of urinary calcium and oxalate excretion, serum 25(OH)D3 and albumin level in relation to renal stone formation. *Scand. J. Urol. Nephrol.* 1982; **16**: 155–61.

- 71 Chen YK, Lin HC, Chen CS, Yeh SD. Seasonal variations in urinary calculi attacks and their association with climate: a population based study. *J. Urol.* 2008; **179**: 564–9.
- 72 Ahlstrand C, Tiselius HG. Renal stone disease in a Swedish district during one year. *Scand. J. Urol. Nephrol.* 1981; **15**: 143–6.
- 73 Almby B, Meirik O, Schönebeck J. Incidence, morbidity and complications of renal and ureteral calculi in a well defined geographical area. *Scand. J. Urol. Nephrol.* 1975; **9**: 249–53.
- 74 Hussain F, Billimoria FR, Singh PP. Urolithiasis in northeast Bombay: seasonal prevalence and chemical composition of stones. *Int. Urol. Nephrol.* 1990; **22**: 119–24.
- 75 Hesse A, Kruse R, Geilenkeuser WJ, Schmidt M. Quality control in urinary stone analysis: results of 44 ring trials (1980–2001). *Clin. Chem. Lab. Med.* 2005; **43**: 298–303.
- 76 Prezioso D, Di Martino M, Galasso R, Iapicca G. Laboratory assessment. *Urol. Int.* 2007; **79**(Suppl 1): 20–5.
- 77 Moreira DM, Friedlander JI, Carons A et al. Association of serum biochemical metabolic panel with stone composition. *Int. J. Urol.* 2015; **22**: 195–9.
- 78 Mandel N, Mandel I, Fryjoff K, Rejniak T, Mandel G. Conversion of calcium oxalate to calcium phosphate with recurrent stone episodes. *J. Urol.* 2003; **169**: 2026–9.
- 79 Shrestha R, Bista Y, Khan A. Current diagnostic approach and initial treatment patterns for renal colic in Emergency Department. *J. Nepal Health Res. Counc.* 2017; **15**: 38–43.
- 80 Brisbane W, Bailey MR, Sorensen MD. An overview of kidney stone imaging techniques. *Nat. Rev. Urol.* 2016; **13**: 654–62.
- 81 Magrill D, Patel U, Anson K. Impact of imaging in urolithiasis treatment planning. *Curr. Opin. Urol.* 2013; **23**: 158–63.
- 82 Fulgham PF, Assimos DG, Pearle MS, Preminger GM. Clinical effectiveness protocols for imaging in the management of ureteral calculous disease: AUA Technology Assessment. *J. Urol.* 2013; **189**: 1203–13.
- 83 Sung CK, Moon MH, Son H et al. Standard vs reduced-radiation-dose CT in the tracing of the ureter. *Abdom. Radiol.* 2017; **42**: 900–7.
- 84 Smith-Bindman R, Aubin C, Bailitt J et al. Ultrasonography versus computed tomography for suspected nephrolithiasis. *N. Engl. J. Med.* 2014; **371**: 1100–10.
- 85 Gottlieb M, Long B, Koyfman A. The evaluation and management of urolithiasis in the emergency department: a review of the literature. *Am. J. Emerg. Med.* 2018; **36**: 699–706.
- 86 Bansal AD, Hui J, Goldfarb DS. Asymptomatic nephrolithiasis detected by ultrasound. *Clin. J. Am. Soc. Nephrol.* 2009; **4**: 680–4.
- 87 Sorensen MD, Chi T, Shara NM et al. Activity, energy intake, obesity, and the risk of incident kidney stones in postmenopausal women: a report from the Women's Health Initiative. *J. Am. Soc. Nephrol.* 2014; **25**: 362–9.
- 88 Sorensen MD, Hsi RS, Chi T et al. Dietary intake of fiber, fruit and vegetables decreases the risk of incident kidney stones in women: a Women's Health Initiative report. *J. Urol.* 2014; **192**: 1694–9.
- 89 Koyuncu HH, Yencilek F, Eryildirim B et al. Family history in stone disease: how important is it for the onset of the disease and the incidence of recurrence? *Urol. Res.* 2010; **38**: 105–9.
- 90 Krieger JN, Kronmal RA, Coxon V et al. Dietary and behavioral risk factors for urolithiasis: potential implications for prevention. *Am. J. Kidney Dis.* 1996; **28**: 195–201.
- 91 Trinchieri A, Ostini F, Nespoli R et al. A prospective study of recurrence rate and risk factors for recurrence after a first renal stone. *J. Urol.* 1999; **162**: 27–30.
- 92 Ferraro PM, Curhan GC, D'Addessi A et al. Risk of recurrence of idiopathic calcium kidney stones: analysis of data from the literature. *J. Nephrol.* 2017; **30**: 227–33.
- 93 Somani BK, Dellis A, Liatsikos E, Skolarikos A. Review on diagnosis and management of urolithiasis in pregnancy: an ESUT practical guide for urologists. *World J. Urol.* 2017; **35**: 1637–49.
- 94 Valovska MI, Pais VM Jr. Contemporary best practice urolithiasis in pregnancy. *Ther. Adv. Urol.* 2018; **10**: 127–38.
- 95 MacNeily AE, Goldenberg SL, Allen GJ et al. Sonographic visualization of the ureter in pregnancy. *J. Urol.* 1991; **146**: 298–301.
- 96 Laing FC, Benson CB, DiSalvo DN et al. Distal ureteral calculi: detection with vagina US. *Radiology* 1994; **192**: 545–8.
- 97 Silverman SG, Levendecker JR, Amis ES Jr. What is the current role of CT urography and MR urography in the evaluation of the urinary tract? *Radiology* 2009; **250**: 309–23.
- 98 White WM, Johnson EB, Zite NB et al. Predictive value of current imaging modalities for the detection of urolithiasis during pregnancy: a multicenter, longitudinal study. *J. Urol.* 2013; **189**: 931–4.
- 99 Van Batavia JP, Tasian GE. Clinical effectiveness in the diagnosis and acute management of pediatric nephrolithiasis. *Int. J. Surg.* 2016; **36**: 698–704.
- 100 Passerotti JS, Chow JS, Silva A et al. Ultrasound versus computerized tomography for evaluating urolithiasis. *J. Urol.* 2009; **182**: 1829–34.
- 101 Abdelhamid M, Mosharafa AA, Ibrahim H et al. A prospective evaluation of high-resolution CT parameters in predicting extracorporeal shockwave lithotripsy success for upper urinary tract calculi. *J. Endourol.* 2016; **11**: 1227–32.
- 102 Ng CF, Siu DYW, Wong A, Goggins W, Chan ES, Wong KT. Development of a scoring system from non-contrast computerized tomography measurements to improve selection of upper ureteral stones for extracorporeal shock wave lithotripsy. *J. Urol.* 2009; **181**: 1151–7.
- 103 Tran TY, McGillen K, Cone EB, Pareek G. Triple D score is a reportable predictor of shockwave lithotripsy stone-free rates. *J. Endourol.* 2015; **29**: 226–30.
- 104 Okhunov Z, Friedlander JI, George AK et al. STONE nephrolithometry: novel surgical classification system for kidney calculi. *Urology* 2013; **81**: 1154–9.
- 105 Smith A, Averch TD, Shahrour K et al. A nephrolithometric nomogram to predict treatment success of percutaneous nephrolithotomy. *J. Urol.* 2013; **190**: 149–56.
- 106 Jeong CW, Jung JW, Cha WH et al. Seoul National University Renal Stone Complexity Score for predicting stone-free rate after percutaneous nephrolithotomy. *PLoS One* 2013; **8**: e65888.
- 107 Jung JW, Lee BK, Park YH et al. Modified Seoul National University Renal Stone Complexity score for retrograde intrarenal surgery. *Urolithiasis* 2014; **42**: 335–40.
- 108 Meng XJ, Mi QW, Hu T, Zhong WD. Value of CT angiography in reducing the risk of hemorrhage associated with mini-percutaneous nephrolithotomy. *Int. Braz. J. Urol.* 2015; **41**: 690–6.
- 109 Piao S, Park J, Son H, Jeong H, Cho SY. Evaluation of renal function in patients with a main renal stone larger than 1 cm and perioperative renal functional change in minimally invasive renal stone surgery: a prospective, observational study. *World J. Urol.* 2016; **34**: 725–32.
- 110 Wehbi E, Salle A, Kanaroglou N et al. Measurement of differential renal function by scintigraphy in hydronephrotic kidneys: importance of conjugate views for accurate evaluation. *J. Urol.* 2016; **195**: 471–5.
- 111 Ng CF, Chan LW, Wong KT, Cheng CW, Yu SC, Wong WS. Prediction of differential creatinine clearance in chronically obstructed kidneys by non-contrast helical computerized tomography. *Int. Braz. J. Urol.* 2004; **30**: 102–7.
- 112 Cakiroglu B, Eyyupoglu E, Hazar AI, Uyanik BS, Nuhoglu B. Metabolic assessment of recurrent and first renal calcium oxalate stone formers. *Arch. Ital. Urol. Androl.* 2016; **88**: 101–5.
- 113 Pearle MS, Roehrborn CG, Pak CY. Meta-analysis of randomized trials for medical prevention of calcium oxalate nephrolithiasis. *J. Endourol.* 1999; **9**: 679–85.
- 114 Tiselius HG, Daudon M, Thomas K, Seitz C. Metabolic work-up of patients with urolithiasis: indications and diagnostic algorithm. *Eur. Urol. Focus* 2017; **3**: 62–71.
- 115 Milrose JC, Kaufman SR, Hollenbeck BK, Wolf JS, Hollingsworth JM. Prevalence of 24-hour urine collection in high-risk stone formers. *J. Urol.* 2014; **191**: 376–80.
- 116 Pearle MS, Goldfarb DS, Assimos DG et al. Medical management of kidney stones: AUA guideline. *J. Urol.* 2014; **192**: 316–24.
- 117 Parks JH, Goldfisher E, Asplin JR, Coe FL. A single 24-hour urine collection is inadequate for the medical evaluation of nephrolithiasis. *J. Urol.* 2002; **167**: 1607–12.
- 118 His RS, Sanford T, Goldfarb DS, Stoller ML. The role of the 24-hour urine collection in the prevention of kidney stone recurrence. *J. Urol.* 2017; **197**: 1084–9.
- 119 Normal RW, Bath SS, Robertson WG, Peacock M. When should patients with symptomatic urinary stone disease be evaluated metabolically? *J. Urol.* 1984; **132**: 1137–9.
- 120 Engeler DS, Schmid S, Schmid HP et al. The ideal analgesic treatment for acute renal colic – theory and practice. *Scand. J. Urol. Nephrol.* 2008; **42**: 137–42.
- 121 Shokeir AA, Abdulmaaboud M, Farage Y et al. Resistive index in renal colic: the effect of nonsteroidal anti-inflammatory drugs. *BJU Int.* 1999; **84**: 249–51.

- 122 Pathan SA, Mitra B, Straney LD *et al.* Delivering safe and effective analgesia for management of renal colic in the emergency department: a double-blind, multigroup, randomised controlled trial. *Lancet* 2016; **387**: 1999–2007.
- 123 Holdgate A, Pollock T. Systematic review of the relative efficacy of non-steroidal anti-inflammatory drugs and opioids in the treatment of acute renal colic. *BMJ* 2004; **328**: 1401.
- 124 Seitz C, Liatsikos E, Porpiglia F *et al.* Medical therapy to facilitate the passage of stones: what is the evidence? *Eur. Urol.* 2009; **56**: 455–71.
- 125 Davenport K, Timoney AG, Keeley FX Jr. Effect of smooth muscle relaxant drugs on proximal human ureteric activity in vivo: a pilot study. *Urol. Res.* 2007; **35**: 207–13.
- 126 Somani BK, Aboumarzouk O, Traxer O *et al.* Medical expulsive therapy for ureteral stones: where do we go from here? *Nat. Rev. Urol.* 2016; **13**: 608–12.
- 127 Campschroer T, Zhu Y, Duijvesz D *et al.* Alpha-blockers as medical expulsive therapy for ureteral stones. *Cochrane Database Syst. Rev.* 2014; CD008509.
- 128 Ye Z, Yang H, Li H *et al.* A multicentre, prospective, randomized trial Comparative efficacy of tamsulosin and nifedipine in medical expulsive therapy for distal ureteric stones with renal colic. *BJU Int.* 2011; **108**: 276–9.
- 129 Ye Z, Zeng G, Yang H *et al.* Efficacy and safety of tamsulosin in medical expulsive therapy for distal ureteral stones with renal colic: a multicenter, randomized, double-blind, placebo-controlled trial. *Eur. Urol.* 2018; **73**: 385–91.
- 130 Meltzer AC, Burrows PK, Wolfson AB *et al.* Effect of tamsulosin on passage of symptomatic ureteral stones: a randomized clinical trial. *JAMA Intern. Med.* 2018; **178**: 1051–7.
- 131 Furyk JS, Chu K, Banks C *et al.* Distal ureteric stones and tamsulosin: a double-blind, placebo-controlled, randomized, multicenter trial. *Ann. Emerg. Med.* 2016; **67**: 86–95.e2.
- 132 Wang CJ, Huang SW, Chang CH. Efficacy of an  $\alpha 1$  blocker in expulsive therapy of lower ureteral stones. *J. Endourol.* 2008; **22**: 41–6.
- 133 Hermanns T, Sauer mann P, Rufibach K *et al.* Is there a role for tamsulosin in the treatment of distal ureteral stones of 7 mm or less? Results of a randomised, double blind, placebo-controlled trial. *Eur. Urol.* 2009; **56**: 407–12.
- 134 Sur RL, Shore N, L'Esperance J *et al.* Silodosin to facilitate passage of ureteral stones: a multi-institutional, randomized, double blinded, placebo-controlled trial. *Eur. Urol.* 2015; **67**: 959–64.
- 135 Pickard R, Starr K, MacLennan G *et al.* Medical expulsive therapy in adults with ureteric colic: a multicentre, randomised, placebo controlled trial. *Lancet* 2015; **386**: 341–9.
- 136 Pourmand A, Nadendla R, Mazer-Amirshahi M *et al.* Tamsulosin for urolithiasis: a review of the recent literature and current controversies. *Am. J. Emerg. Med.* 2016; **34**: 2217–21.
- 137 Moon YJ, Kim H-W, Kim JB, Kim HJ, Chang Y-S. Distribution of ureteral stones and factors affecting their location and expulsion in patients with renal colic. *Korean J. Urol.* 2015; **56**: 717–21.
- 138 Lee KS, Ha JS, Koo KC. Significance of neutrophil-to-lymphocyte ratio as a novel indicator of spontaneous ureter stone passage. *Yonsei Med. J.* 2017; **58**: 988–93.
- 139 Liao W, Zhang L, Yu Y *et al.* Effect of external physical vibration lithecbole in promoting the clearance of residual renal stones after flexible ureteroscopy: single center randomized controlled study. *J. Clin. Urol.* 2017; **32**: 926–9.
- 140 Yang Z, Wu W, Tang F *et al.* EPVL for the treatment of lower calyx residual stone after RIRS: a prospective single-center randomized controlled trial. *J. Clin. Urol.* 2017; **32**: 361–4.
- 141 Wu W, Yang Z, Xu C *et al.* External physical vibration lithecbole promotes the clearance of upper urinary stones after retrograde intrarenal surgery: a prospective, multicenter, randomized controlled trial. *J. Urol.* 2017; **197**: 1289–95.
- 142 Wang X, Xie K, Jin L *et al.* Treatment effect of physical vibration lithecbole after extracorporeal shock wave lithotripsy. *J. Clin. Urol.* 2015; **30**: 720–2.
- 143 Abou-Elela A. Epidemiology, pathophysiology, and management of uric acid urolithiasis: a narrative review. *J. Adv. Res.* 2017; **8**: 513–27.
- 144 Moran ME, Abrahams HM, Burday DE, Greene TD. Utility of oral dissolution therapy in the management of referred patients with secondarily treated uric acid stones. *Urology* 2002; **59**: 206–10.
- 145 Traxer O, Letendre J. Extracorporeal lithotripsy endoscopically controlled by ureterorenoscopy (LECURS): a new concept for the treatment of kidney stones—first clinical experience using digital ureterorenoscopes. *World J. Urol.* 2014; **32**: 715–21.
- 146 Rabii R, Joual A, Rais H *et al.* Pyonephrosis: diagnosis and treatment: report of 14 cases. *Ann. Urol.* 2000; **34**: 161–4.
- 147 St Lezin M, Hofmann R, Stoller ML. Pyonephrosis: diagnosis and treatment. *Br. J. Urol.* 1992; **70**: 360–3.
- 148 Somani BK, Nabi G, Thorpe P *et al.* Is percutaneous drainage the new gold standard in the management of emphysematous pyelonephritis? Evidence from a systematic review. *J. Urol.* 2008; **179**: 1844–9.
- 149 Li C, Wang X, Deng Y. Two cases report of gastro-pyelonephritis clinical cure. *Chin. J. Nephrol.* 2014; **30**: 558.
- 150 Xiong H, Zhu Z, Zheng T *et al.* Clinical study of calyx calculi treatment in moderate to severe hydronephrosis with multi-calyx calculi with minimally invasive percutaneous nephrolithotomy. *Chin. J. Urol.* 2017; **4**: 28–31.
- 151 Chung VY, Turney BW. The success of shock wave lithotripsy (SWL) in treating moderate-sized (10-20 mm) renal stones. *Urolithiasis* 2016; **44**: 441–4.
- 152 Ng CF, Wong A, Tolley DA. A single center experience of the usefulness of caliceal-pelvic height in three different lithotripters. *J. Endourol.* 2008; **22**: 1409–15.
- 153 Türk C, Petfik A, Sarica K *et al.* EAU guidelines on interventional treatment for urolithiasis. *Eur. Urol.* 2016; **69**: 475–82.
- 154 Sun XZ, Zhang ZW. Shockwave lithotripsy: instrumentation and status in China. *J. Endourol.* 2005; **19**: 774–9.
- 155 Jagtap J, Mishra S, Bhattu A, Ganpule A, Sabnis R, Desai M. Evolution of shockwave lithotripsy (SWL) technique: a 25-year single centre experience of > 5000 patients. *BJU Int.* 2014; **114**: 748–53.
- 156 Ng CF, Luke S, Yee CH, Chu WC, Wong KT, Yuen JW. A prospective randomized study comparing the effect of different kidney protection treatment protocols on acute renal injury after extracorporeal shockwave lithotripsy. *J. Endourol.* 2017; **31**: 57–65.
- 157 Ng CF, Law VTT, Chiu PKF, Tan CB, Man CW, Chu PSK. Hepatic haematoma after shockwave lithotripsy for renal stones. *Urol. Res.* 2012; **40**: 785–9.
- 158 Fankhauser CD, Kranzbühler B, Poyet C, Hermanns T, Sulser T, Steurer J. Long-term adverse effects of extracorporeal shock-wave lithotripsy for nephrolithiasis and ureterolithiasis: a systematic review. *Urology* 2015; **85**: 991–1006.
- 159 Deng T, Liao B, Tian Y *et al.* New-onset diabetes mellitus after shock wave lithotripsy for urinary stone: a systematic review and meta-analysis. *Urolithiasis* 2015; **43**: 227–31.
- 160 Schnabel MJ, Gierth M, Bründl J, Chaussy CG, Burger M, Fritsche HM. Antiplatelet and anticoagulative medication during shockwave lithotripsy. *J. Endourol.* 2014; **28**: 1034–9.
- 161 Perez Castro E, Osther PJ, Jinga V *et al.* Differences in ureteroscopic stone treatment and outcomes for distal, mid-, proximal, or multiple ureteral locations: the Clinical Research Office of the Endourological Society ureteroscopy global study. *Eur. Urol.* 2014; **66**: 102–9.
- 162 De S, Autorino R, Kim FJ *et al.* Percutaneous nephrolithotomy versus retrograde intrarenal surgery: a systematic review and meta-analysis. *Eur. Urol.* 2015; **67**: 125–37.
- 163 Ruhayel Y, Tepeler A, Dabestani S *et al.* Tract sizes in miniaturized percutaneous nephrolithotomy: a systematic review from the European Association of Urology Urolithiasis Guidelines Panel. *Eur. Urol.* 2017; **72**: 220–35.
- 164 Rizvi SAH, Hussain M, Askari SH *et al.* Surgical outcomes of percutaneous nephrolithotomy in 3402 patients and results of stone analysis in 1559 patients. *BJU Int.* 2017; **120**: 702–9.
- 165 Seitz C, Desai M, Häcker A *et al.* Incidence, prevention, and management of complications following percutaneous nephrolitholapaxy. *Eur. Urol.* 2012; **61**: 146–58.
- 166 Wen J, Xu G, Du C *et al.* Minimally invasive percutaneous nephrolithotomy versus endoscopic combined intrarenal surgery with flexible ureteroscope for partial staghorn calculi: a randomised controlled trial. *Int. J. Surg.* 2016; **28**: 22–7.
- 167 Kramer BA, Hammond L, Schwartz BF. Laparoscopic pyelolithotomy: indications and technique. *J. Endourol.* 2007; **21**: 860–1.
- 168 Stein RJ, Turna B, Nguyen MM *et al.* Laparoscopic pyeloplasty with concomitant pyelolithotomy: technique and outcomes. *J. Endourol.* 2008; **22**: 1251–5.

- 169 Al-Hunayan A, Abdulhalim H, El-Bakry E, Hassabo M, Kehinde EO. Laparoscopic pyelolithotomy: is the retroperitoneal route a better approach? *Int. J. Urol.* 2009; **16**: 181–6.
- 170 Miller SD, Ng CS, Strem SB, Gill IS. Laparoscopic management of caliceal diverticular calculi. *J. Urol.* 2002; **167**: 1248–52.
- 171 Simforoosh N, Aminsharifi A, Tabibi A et al. Laparoscopic anatomic nephrolithotomy for managing large staghorn calculi. *BJU Int.* 2008; **101**: 1293–6.
- 172 Kijvikai K, Patcharatrakul S. Laparoscopic ureterolithotomy: its role and some controversial technical considerations. *Int. J. Urol.* 2006; **13**: 206–10.
- 173 Scoffone CM, Cracco CM, Cossu M, Grande S, Poggio M, Scarpa RM. Endoscopic combined intrarenal surgery in Galdakao-modified supine Valdivia position: a new standard for percutaneous nephrolithotomy? *Eur. Urol.* 2008; **54**: 1393–403.
- 174 Cracco CM, Scoffone CM, Scarpa RM. New developments in percutaneous techniques for simple and complex branched renal stones. *Curr. Opin. Urol.* 2011; **21**: 154–60.
- 175 Kuroda S, Ito H, Sakamaki K et al. Development and internal validation of a classification system for predicting success rates after endoscopic combined intrarenal surgery in the modified valdivia position for large renal stones. *Urology* 2015; **86**: 697–702.
- 176 Kwon O, Park J, Cho MC, Son H, Jeong H, Cho SY. Feasibility of single-session endoscopic combined intrarenal surgery for ipsilateral large renal stones and retrograde intrarenal surgery for contralateral renal stones: initial experience. *Int. J. Urol.* 2017; **24**: 377–82.
- 177 Hamamoto S, Yasui T, Okada A et al. Efficacy of endoscopic combined intrarenal surgery in the prone split-leg position for staghorn calculi. *J. Endourol.* 2015; **29**: 19–24.
- 178 Manikandan R, Mittal JK, Dorairajan LN, Mishra AK, Sreerag KS, Verma A. Endoscopic combined intrarenal surgery for simultaneous renal and ureteral stones: a retrospective study. *J. Endourol.* 2016; **30**: 1056–61.
- 179 Desai J, Zeng G, Zhao Z, Zhong W, Chen W, Wu W. A novel technique of ultra-mini-percutaneous nephrolithotomy: introduction and an initial experience for treatment of upper urinary calculi less than 2 cm. *Biomed. Res. Int.* 2013; **2013**: 1–6.
- 180 Desai M, Sharma R, Mishra S, Sabnis R, Stief C, Bader M. Single-step percutaneous nephrolithotomy (microperc): the initial clinical report. *J. Urol.* 2011; **186**: 140–5.
- 181 Sabnis R, Ganesamoni R, Ganpule A et al. Current role of microperc in the management of small renal calculi. *Indian J. Urol.* 2013; **29**: 214–8.
- 182 Park J, Oh S, Cho MC et al. The acceptable criterion of stone burden and the significant factors to choose retrograde intrarenal stone surgery or miniaturized percutaneous nephrolithotomy for the treatment of renal stones > 10 mm. *J. Endourol.* 2017; **31**: 1012–8.
- 183 Ozden E, Mercimek MN. Percutaneous nephrolithotomy in pediatric age group: assessment of effectiveness and complications. *World J. Nephrol.* 2016; **5**: 84–9.
- 184 Haghghi R, Zeraati H, Ghorban ZM. Ultra-mini-percutaneous nephrolithotomy (PCNL) versus standard PCNL: a randomised clinical trial. *Arab. J. Urol.* 2017; **15**: 294–8.
- 185 Zhu W, Liu Y, Liu L et al. Minimally invasive versus standard percutaneous nephrolithotomy: a meta-analysis. *Urolithiasis* 2015; **43**: 563–70.
- 186 Kukreja RA. Should mini percutaneous nephrolithotomy (MiniPNL/Miniperc) be the ideal tract for medium-sized renal calculi (15–30 mm)? *World J. Urol.* 2018; **36**: 285–91.
- 187 Nagele U, Horstmann M, Sievert KD et al. A newly designed amplatz sheath decreases intrapelvic irrigation pressure during mini-percutaneous nephrolitholapaxy: an in-vitro pressure-measurement and microscopic study. *J. Endourol.* 2007; **21**: 1113–6.
- 188 Lee JW, Park J, Lee SB, Son H, Cho SY, Jeong H. Mini-percutaneous nephrolithotomy vs retrograde intrarenal surgery for renal stones larger than 10 mm: a prospective randomized controlled trial. *Urology* 2015; **86**: 873–7.
- 189 Gao XS, Liao BH, Chen YT et al. Different tract sizes of miniaturized percutaneous nephrolithotomy versus retrograde intrarenal surgery: a systematic review and meta-analysis. *J. Endourol.* 2017; **31**: 1101–10.
- 190 Jiang H, Yu Z, Chen L et al. Minimally invasive percutaneous nephrolithotomy versus retrograde intrarenal surgery for upper urinary stones: a systematic review and meta-analysis. *Biomed. Res. Int.* 2017; **2017**: 2035851.
- 191 Amón Sesmero JH, Cepeda Delgado M et al. Small-calibre percutaneous nephrolithotomy (SC-PCNL) Therapeutic decision algorithm. *Actas Urol. Esp.* 2017; **41**: 552–61 [Article in English, Spanish].
- 192 Sabnis RB, Ganesamoni R, Doshi A, Ganpule AP, Jagtap J, Desai MR. Micropercutaneous nephrolithotomy (microperc) vs retrograde intrarenal surgery for the management of small renal calculi: a randomized controlled trial. *BJU Int.* 2013; **112**: 355–61.
- 193 Kumar A, Kumar N, Vasudeva P, Kumar Jha S, Kumar R, Singh H. A prospective, randomized comparison of shock wave lithotripsy, retrograde intrarenal surgery and miniperc for treatment of 1 to 2 cm radiolucent lower calyceal renal calculi: a single center experience. *J. Urol.* 2015; **193**: 160–4.
- 194 Sabnis RB, Jagtap J, Mishra S, Desai M. Treating renal calculi 1–2 cm in diameter with minipercutaneous or retrograde intrarenal surgery: a prospective comparative study. *BJU Int.* 2012; **110**: E346–9.
- 195 Ozturk U, Sener NC, Goktug HN, Nalbant I, Gucuk A, Imamoglu MA. Comparison of percutaneous nephrolithotomy, shock wave lithotripsy, and retrograde intrarenal surgery for lower pole renal calculi 10–20 mm. *Urol. Int.* 2013; **91**: 345–9.
- 196 Knoll T, Jessen JP, Honeck P, Wendt-Nordahl G. Flexible ureterorenoscopy versus miniaturized PNL for solitary renal calculi of 10–30 mm size. *World J. Urol.* 2011; **29**: 755–9.
- 197 Ramón dFF, García-Tello A, Andrés G et al. Comparative study of retrograde intrarenal surgery and micropercutaneous nephrolithotomy in the treatment of intermediate-sized kidney stones. *Actas Urol. Esp.* 2014; **38**: 576–83.
- 198 Armagan A, Tepeler A, Silay MS et al. Micropercutaneous nephrolithotomy in the treatment of moderate-size renal calculi. *J. Endourol.* 2013; **27**: 177–81.
- 199 Tepeler A, Armagan A, Sancaktutar AA et al. The role of microperc in the treatment of symptomatic lower pole renal calculi. *J. Endourol.* 2013; **27**: 13–8.
- 200 Piskin MM, Guven S, Kilinc M, Arslan M, Goger E, Ozturk A. Preliminary, favorable experience with microperc in kidney and bladder stones. *J. Endourol.* 2012; **26**: 1443–7.
- 201 Zengin K, Tanik S, Karakoyunlu N et al. Retrograde intrarenal surgery versus percutaneous lithotripsy to treat renal stones 2–3 cm in diameter. *Biomed. Res. Int.* 2015; **2015**: 914231.
- 202 Ding X, Xu ST, Huang YH et al. Management of symptomatic caliceal diverticular calculi: minimally invasive percutaneous nephrolithotomy versus flexible ureterorenoscopy. *Chronic Dis. Transl. Med.* 2016; **2**: 250–6.
- 203 Bas O, Ozyuvali E, Aydogmus Y et al. Management of calyceal diverticular calculi: a comparison of percutaneous nephrolithotomy and flexible ureterorenoscopy. *Urolithiasis* 2015; **43**: 155–61.
- 204 Prakash G, Sinha RJ, Jhanwar A, Bansal A, Singh V. Outcome of percutaneous nephrolithotomy in anomalous kidney: is it different? *Urol. Ann.* 2017; **9**: 23–6.
- 205 Khadgi S, Shrestha B, Ibrahim H, Shrestha S, ElSheemy MS, Al-Kandari AM. Mini-percutaneous nephrolithotomy for stones in anomalous-kidneys: a prospective study. *Urolithiasis* 2017; **45**: 407–14.
- 206 Singh AG, Chhabra JS, Sabnis R et al. Role of flexible uretero-rensoscopy in management of renal calculi in anomalous kidneys: single-center experience. *World J. Urol.* 2017; **35**: 319–24.
- 207 Hübner WA, Irby P, Stoller ML. Natural history and current concepts for the treatment of small ureteral calculi. *Eur. Urol.* 1993; **24**: 172–6.
- 208 Hollingsworth JM, Canales BK, Rogers MAM et al. Alpha blockers for treatment of ureteric stones: systematic review and meta-analysis. *BMJ* 2016; **355**: i6112.
- 209 Drake T, Grivas N, Dabestani S et al. What are the benefits and harms of ureteroscopy compared with shock-wave lithotripsy in the treatment of upper ureteral stones? A systematic review. *Eur. Urol.* 2017; **72**: 772–86.
- 210 Turkan S, Ekmekcioglu O, Irkilata L, Aydin M. Is semirigid ureteroscopy sufficient in the treatment of proximal ureteral stones? When is combined therapy with flexible ureteroscopy needed? *Springerplus* 2016; **5**: 30.
- 211 Honeck P, Häcker A, Alken P, Michel MS, Knoll T. Shock wave lithotripsy versus ureteroscopy for distal ureteral calculi: a prospective study. *Urol. Res.* 2006; **34**: 190–2.
- 212 Matlaga BR, Jansen JP, Meckley LM, Byrne TW, Lingeman JE. Treatment of ureteral and renal stones: a systematic review and meta-analysis of randomized, controlled trials. *J. Urol.* 2012; **188**: 130–7.
- 213 Li T, Gao L, Chen P et al. Supine versus prone position during extracorporeal shockwave lithotripsy for treating distal ureteral calculi: a systematic review and meta-analysis. *Urol. Int.* 2016; **97**: 1–7.
- 214 Shah OD, Matlaga BR, Assimos DG. Selecting treatment for distal ureteral calculi: shock wave lithotripsy versus ureteroscopy. *Rev. Urol.* 2003; **5**: 40–4.
- 215 Tsai YL, Seow KM, Yieh CH et al. Comparative study of conservative and surgical management for symptomatic moderate and severe hydronephrosis

- in pregnancy: a prospective randomized study. *Acta Obstet. Gynecol. Scand.* 2007; **86**: 1047–50.
- 216 Ngai HY, Salih HQ, Albeer A *et al.* Double-J ureteric stenting in pregnancy: a single-centre experience from Iraq. *Arab. J. Urol.* 2013; **11**: 148–51.
- 217 Semins MJ, Trock BJ, Matlaga BR. The safety of ureteroscopy during pregnancy: a systematic review and meta-analysis. *J. Urol.* 2009; **181**: 139–43.
- 218 Zhang S, Liu G, Duo Y *et al.* Application of ureteroscope in emergency treatment with persistent renal colic patients during pregnancy. *PLoS One* 2016; **11**: e0146597.
- 219 Teleb M, Ragab A, Dawod T *et al.* Definitive ureteroscopy and intracorporeal lithotripsy in treatment of ureteral calculi during pregnancy. *Arab. J. Urol.* 2014; **12**: 299–303.
- 220 Dangle P, Ayyash O, Shaikh H *et al.* Predicting spontaneous stone passage in prepubertal children: a single institution cohort. *J. Endo. Urol.* 2016; **30**: 945–9.
- 221 Lu P, Wang Z, Song R *et al.* The clinical efficacy of extracorporeal shock wave lithotripsy in pediatric urolithiasis: a systematic review and meta-analysis. *Urolithiasis* 2015; **43**: 199–206.
- 222 Ishii H, Griffin S, Somani BK. Ureteroscopy for stone disease in the paediatric population: a systematic review. *BJU Int.* 2015; **115**: 867–73.
- 223 Kapoor R, Solanki F, Singhania P *et al.* Safety and efficacy of percutaneous nephrolithotomy in the pediatric population. *J. Endo. Urol.* 2008; **22**: 637–40.
- 224 Glowacki LS, Beecroft ML, Cook RJ *et al.* The natural history of asymptomatic urolithiasis. *J. Urol.* 1992; **147**: 319–21.
- 225 Selby MG, Vrtiska TJ, Krambeck AE *et al.* Quantification of asymptomatic kidney stone burden by computed tomography for predicting future symptomatic stone events. *Urology* 2015; **85**: 45–50.
- 226 Kang HW, Lee SK, Kim T *et al.* Natural history of asymptomatic renal stones and prediction of stone related events. *J. Urol.* 2013; **189**: 1740–6.
- 227 Koh LT, Ng FC, Ng KK. Outcomes of long-term follow-up of patients with conservative management of asymptomatic renal calculi. *BJU Int.* 2012; **109**: 622–5.
- 228 Inci K, Sahin A, Islamoglu E *et al.* Prospective long-term followup of patients with asymptomatic lower pole caliceal stones. *J. Urol.* 2007; **177**: 2189–92.
- 229 Keeley FX, Tilling K, Elves A *et al.* Preliminary results of a randomized controlled trial of prophylactic shock wave lithotripsy for small asymptomatic renal calyceal stones. *BJU Int.* 2001; **87**: 1–8.
- 230 Yuruk E, Binbay M, Sari E *et al.* A prospective, randomized trial of management for asymptomatic lower pole calculi. *J. Urol.* 2010; **183**: 1424–8.
- 231 Sarkissian C, Noble M, Li J *et al.* Patient decision making for asymptomatic renal calculi: balancing benefit and risk. *Urology* 2013; **81**: 236–40.
- 232 McCauley LR, Dyer AJ, Stern K, Hicks T, Nguyen MM. Factors influencing fluid intake behavior among kidney stone formers. *J. Urol.* 2012; **187**: 1282–6.
- 233 Tarplin S, Monga M, Stern KL, McCauley LR, Sarkissian C, Nguyen MM. Predictors of reporting success with increased fluid intake among kidney stone patients. *Urology* 2016; **88**: 49–56.
- 234 Borofsky MS, Dauw CA, York N, Terry C, Lingeman JE. Accuracy of daily fluid intake measurements using a “smart” water bottle. *Urolithiasis* 2017; **62**: 160–6.
- 235 Hesse A, Brändle E, Wilbert D *et al.* Study on the prevalence and incidence of urolithiasis in Germany comparing the years 1979 vs 2000. *Eur. Urol.* 2003; **44**: 709–13.
- 236 Strohmaier WL. Course of calcium stone disease without treatment. What can we expect? *Eur. Urol.* 2000; **37**: 339.
- 237 Keoghane S, Walmsley B, Hodgson D. The natural history of untreated renal tract calculi. *BJU Int.* 2010; **105**: 1627.
- 238 Straub M, Strohmaier WL, Berg W *et al.* Diagnosis and metaphylaxis of stone disease Consensus concept of the National Working Committee on Stone Disease for the upcoming German Urolithiasis Guideline. *World J. Urol.* 2005; **23**: 309–23.
- 239 Asplin JR, Coe FL. Hyperoxaluria in kidney stone formers treated with modern bariatric surgery. *J. Urol.* 2007; **177**: 565–9.
- 240 Gonzalez RD, Canales BL. Kidney stone risk following modern bariatric surgery. *Curr. Urol. Rep.* 2014; **15**: 401
- 241 Rendina D, De Filippo G, D’Elia L, Strazzullo P. Metabolic syndrome and nephrolithiasis: a systematic review and meta-analysis of the scientific evidence. *J. Nephrol.* 2014; **27**: 371–6.
- 242 Dell’Orto VG, Belotti EA, Goeggel-Simonetti B *et al.* Metabolic disturbances and renal stone promotion on treatment with topiramate: a systematic review. *Br. J. Clin. Pharmacol.* 2014; **77**: 958–64.
- 243 Mufti UB, Nalagatla SK. Nephrolithiasis in autosomal dominant polycystic kidney disease. *J. Endourol.* 2010; **24**: 1557–61.
- 244 Chen Y, DeVivo MJ, Roseman JM. Current trend and risk factors for kidney stones in persons with spinal cord injury: a longitudinal study. *Spinal Cord* 2000; **38**: 346–53.
- 245 Kocvara R, Plasgura P, Petrik A *et al.* A prospective study of nonmedical prophylaxis after a first kidney stone. *BJU Int.* 1999; **84**: 393–8.
- 246 Hess B, Mauron H, Ackermann D, Jaeger P. Effects of a ‘common sense diet’ on urinary composition and supersaturation in patients with idiopathic calcium urolithiasis. *Eur. Urol.* 1999; **36**: 136–43.
- 247 Fink HA, Wilt TJ, Eidman KE *et al.* Medical management to prevent recurrent nephrolithiasis in adults: a systematic review for an American College of Physicians Clinical Guideline. *Ann. Intern. Med.* 2013; **158**: 535–43.
- 248 Wabner CL, Pak CY. Effect of orange juice consumption on urinary stone risk factors. *J. Urol.* 1993; **149**: 1405–8.
- 249 Gettman MT, Ogan K, Brinkley LJ *et al.* Effect of cranberry juice consumption on urinary stone risk factors. *J. Urol.* 2005; **174**: 590–4.
- 250 Ebisuno S, Morimoto S, Yasukawa S, Ohkawa T. Results of long-term rice bran treatment on stone recurrence in hypercalciuric patients. *Br. J. Urol.* 1991; **67**: 237–40.
- 251 Hiatt RA, Ettinger B, Caan B, Quesenberry CP Jr, Duncan D, Citron JT. Randomized controlled trial of a low animal protein, high fiber diet in the prevention of recurrent calcium oxalate kidney stones. *Am. J. Epidemiol.* 1996; **144**: 25–33.
- 252 Dussol B, Iovanna C, Rotily M *et al.* A randomized trial of low-animal-protein or high-fiber diets for secondary prevention of calcium nephrolithiasis. *Nephron Clin. Pract.* 2008; **110**: c185–94.
- 253 Turney BW, Appleby PN, Reynard JM, Noble JG, Key TJ, Allen NE. Diet and risk of kidney stones in the Oxford cohort of the European Prospective Investigation into Cancer and Nutrition (EPIC). *Eur. J. Epidemiol.* 2014; **29**: 363–9.
- 254 Auer BL, Auer D, Rodgers AL. The effect of ascorbic acid ingestion on the biochemical and physicochemical risk factors associated with calcium oxalate kidney stone formation. *Clin. Chem. Lab. Med.* 1998; **36**: 143–7.
- 255 von Unruh GE, Voss S, Sauerbruch T, Hesse A. Dependence of oxalate absorption on the daily calcium intake. *J. Am. Soc. Nephrol.* 2004; **15**: 1567–73.
- 256 Curhan GC, Willett WC, Rimm EB, Stampfer MJ. A prospective study of dietary calcium and other nutrients and the risk of symptomatic kidney stones. *N. Engl. J. Med.* 1993; **328**: 833–8.
- 257 Nouvenne A, Meschi T, Prati B *et al.* Effects of a low salt diet on idiopathic hypercalciuria in calcium oxalate stone former: a 3 month randomized controlled trial. *Am. J. Clin. Nutr.* 2010; **91**: 565.
- 258 Norfin BEC, Need AG, Steurer T *et al.* Nutrition, osteoporosis, and aging. *Ann. N. Y. Acad. Sci.* 1998; **854**: 336–51.
- 259 Cirillo M, Ciacci C, Laurenzi M *et al.* Salt intake, urinary sodium, and hypercalciuria. *Miner. Electrolyte Metab.* 1997; **23**: 265–8.
- 260 Haberer DA, von Baeyer DH. Characteristics of glomerulotubular balance. *Am. J. Physiol.* 1983; **244**: F355–66.
- 261 Driks JH, Cirksena WJ, Berliner RW. The effects of saline infusion on sodium reabsorption by the proximal tubule of the dog. *J. Clin. Invest.* 1965; **44**: 1160–70.
- 262 Friedman PA, Gesek FA. Calcium transport in renal epithelial cells. *Am. J. Physiol.* 1993; **264**: F181–98.
- 263 Robertson WG, Peacock M, Hodgkinson A. Dietary changes and the incidence of urinary calculi in the United Kingdom between 1958 and 1976. *J. Chronic Dis.* 1979; **32**: 469–76.
- 264 Reddy ST, Wanf CY, Sahae K *et al.* Effect of low-carbohydrate high protein diets on acid - base balance, stone - forming propensity and calcium metabolism. *Am. J. Kidney Dis.* 2002; **40**: 265–74.
- 265 Pak CY, Barilla DE, Holt K *et al.* Effect of oral purine load and allopurinol on the crystallization of calcium salts in urine of patients with hyperuricemic calcium urolithiasis. *Am. J. Med.* 1978; **65**: 593–9.
- 266 Breslau NA, Brinkley L, Hill KD *et al.* Relationship of animal protein – rich diet to kidney stone formation and calcium metabolism. *J. Clin. Endocrinol. Metab.* 1988; **66**: 140–6.

- 267 Ettinger B, Citron JT, Livermore B *et al*. Chlorthalidone reduces calcium oxalate calculous recurrence but magnesium does not. *J. Urol.* 1988; **139**: 679–84.
- 268 Laerum E, Larsen S. Thiazide prophylaxis of urolithiasis A double-blind study in general practice. *Acta Med. Scand.* 1984; **215**: 383–9.
- 269 Aa-Opas M, Elomaa I, Prokka L, Alfthan O. Unprocessed bran and intermittent thiazide therapy in prevention of recurrent urinary calcium stones. *Scand. J. Urol. Nephrol.* 1987; **21**: 311–4.
- 270 Alstrand C, Scanwall K, Tiselius HG Prophylactic treatment of calcium formers with hydrochlorothiazide and magnesium Proceedings of sixth European symposium on urolithiasis 1996; 195.
- 271 Arrabal-Martin M, Fernandez-Rodriguez A, Arrabal-Polo MA *et al*. Extracorporeal renal lithotripsy: evolution of residual lithiasis treated with thiazide. *Urology* 2006; **68**: 956–9.
- 272 Pachaly MA, Baena CP, Buair AC, de Fraga FS, Carvalho M. Effects of non-pharmacological interventions on urinary citrate levels: a systematic review and meta-analysis. *Nephrol. Dial. Transplant.* 2016; **31**: 1203–11.
- 273 Odvina CV. Comparative value of orange juice versus lemonade in reducing stone-forming risk. *Clin. J. Am. Soc. Nephrol.* 2006; **1**: 1269–74.
- 274 Tosukhowong P, Yachantha C, Sasivongsbhakdi T *et al*. Citraturic, alkalizing and antioxidative effects of limeade-based regimen in nephrolithiasis patients. *Urol. Res.* 2008; **36**: 149–55.
- 275 Koff SG, Paquette EL, Cullen J, Gancarczyk KK, Tucciarone PR, Schenkman NS. Comparison between lemonade and potassium citrate and impact on urine pH and 24-hour urine parameters in patients with kidney stone formation. *Urology* 2007; **69**: 1013–6.
- 276 Goldfarb DS, Asplin JR. Effect of grapefruit juice on urinary lithogenicity. *J. Urol.* 2001; **166**: 263–7.
- 277 Kohri K, Garside J, Blacklock NJ. The role of magnesium in calcium oxalate urolithiasis. *Br. J. Urol.* 1988; **61**: 107–15.
- 278 Zimmermann DJ, Voss S, von Unruh GE, Hesse A. Importance of magnesium in absorption and excretion of oxalate. *Urol. Int.* 2005; **74**: 262–7.
- 279 Riley JM, Kim H, Averch TD, Kim HJ. Effect of magnesium on calcium and oxalate ion binding. *J. Endourol.* 2013; **27**: 1487–92.
- 280 Grases F, Genestar C, Conte A, March P, Costa-Bauzá A. Inhibitory effect of pyrophosphate, citrate, magnesium and chondroitin sulphate in calcium oxalate urolithiasis. *Br. J. Urol.* 1989; **64**: 235–7.
- 281 Jaipakdee S, Prasongwatana V, Premgamone A *et al*. The effects of potassium and magnesium supplementations on urinary risk factors of renal stone patients. *J. Med. Assoc. Thai.* 2004; **87**: 255–63.
- 282 Kato Y, Yamaguchi S, Yachiku S *et al*. Changes in urinary parameters after oral administration of potassium-sodium citrate and magnesium oxide to prevent urolithiasis. *Urology* 2004; **63**: 7–11.
- 283 Reddy SVK, Shaik AB, Bokkisam S. Effect of potassium magnesium citrate and vitamin b-6 prophylaxis for recurrent and multiple calcium oxalate and phosphate urolithiasis. *Korean J. Urol.* 2014; **55**: 411–6.
- 284 Massey L. Magnesium therapy for nephrolithiasis. *Magnes. Res.* 2005; **18**: 123–6.
- 285 Eisner BH, Sheth S, Dretler SP, Herrick B, Pais VM. High dietary magnesium intake decreases hyperoxaluria in patients with nephrolithiasis. *Urology* 2012; **80**: 780–3.
- 286 Heilberg IP. Treatment of patients with uric acid stones. *Urolithiasis* 2015; **44**: 57–63.
- 287 Heilberg IP, Goldfarb DS. Optimum nutrition for kidney stone disease. *Adv. Chronic Kidney Dis.* 2013; **20**: 165–74.
- 288 Cameron MA, Baker LA, Maalouf NM, Moe OW, Sakhaee K. Circadian variation in urine pH and uric acid nephrolithiasis risk. *Nephrol. Dial. Transplant.* 2007; **22**: 2375–8.
- 289 Akakura K, Egoshi K, Ueda T *et al*. The long-term outcome of cystinuria in Japan. *Urol. Int.* 1998; **61**: 86–9.
- 290 Knoll T, Zöllner A, Wendt-Nordahl G, Michel MS, Alken P. Cystinuria in childhood and adolescence: recommendations for diagnosis, treatment, and follow-up. *Pediatr. Nephrol.* 2004; **20**: 19–24.
- 291 Barbey F, Joly D, Rieu P, Mejean A, Daudon M, Jungers P. Medical treatment of cystinuria: critical reappraisal of long-term results. *J. Urol.* 2000; **163**: 1419–23.
- 292 Saravakos P, Kokkinou V, Giannatos E. Cystinuria: current diagnosis and management. *Urology* 2014; **83**: 693–9.
- 293 Lindell A, Denneberg T, Hellgren E, Jeppsson JO, Tiselius HG. Clinical course and cystine stone formation during tiopronin treatment. *Urol. Res.* 1995; **23**: 111–7.
- 294 Gettman MT, Segura JW. Struvite stones: diagnosis and current treatment concepts. *J. Endourol.* 1999; **13**: 653–8.
- 295 Wong HY, Riedl CR, Griffith DP. Medical management and prevention of struvite stones In: Coe FL, Favus MJ, Pak CYC, Parks JH, Preminger GM (eds) *Kidney Stones: Medical and Surgical Management*, Vol 24 Lippincott-Raven, Philadelphia, 1996; 941–50.
- 296 Jarrar K, Boedeker RH, Weidner W. Struvite stones: long term follow up under metaphylaxis. *Ann. Urol.* 1996; **30**: 112–7.
- 297 Wall I, Tiselius HG. Long-term acidification of urine in patients treated for infected renal stones. *Urol. Int.* 1990; **45**: 336–41.
- 298 Griffith DP, Gleeson MJ, Lee H, Longuet R, Deman E, Earle N. Randomized, double-blind trial of Lithostat (acetohydroxamic acid) in the palliative treatment of infection-induced urinary calculi. *Eur. Urol.* 1991; **20**: 243–7.
- 299 Williams JJ, Rodman JS, Peterson CM. A randomized double-blind study of acetohydroxamic acid in struvite nephrolithiasis. *N. Engl. J. Med.* 1984; **311**: 760–4.
- 300 Saenko VS, Kapsargin FP, Pesegov SV, M V. Troyakov Experience in using hytolysin in the integrated management of urinary tract infections and methapylactics of nephrolithiasis. *Urologia* 2017; **3**: 16–21.
- 301 Wein AJ, Kavoussi LR, Partin AW, Peters CA. *Campbell-Walsh Urology*. 11th edition. Elsevier, 2016.
- 302 Andrabi Y, Patino M, Das CJ, Eisner B, Sahani DV, Kambadakone A. Advances in CT imaging for urolithiasis. *Indian J. Urol.* 2015; **31**: 185–93.
- 303 Dhar M, Denstedt JD. Imaging in diagnosis, treatment, and follow-up of stone patients. *Adv. Chronic Kidney Dis.* 2009; **16**: 39–47.
- 304 Kupeli B, Gurocak S, Tunc L, Senocak C, Karaoglan U, Bozkirli I. Value of ultrasonography and helical computed tomography in the diagnosis of stone-free patients after extracorporeal shock wave lithotripsy (USG and helical CT after SWL). *Int. Urol. Nephrol.* 2005; **37**: 225–30.
- 305 Delvecchio FC, Preminger GM. Management of residual stones. *Urol. Clin. North Am.* 2000; **27**: 347–54.
- 306 Nakamoto T, Sagami K, Yamasaki A *et al*. Long-term results of endourologic treatment of urinary calculi: investigation of risk factors for recurrence or regrowth. *J. Endourol.* 1993; **7**: 297–301.

## Supporting information

Additional Supporting Information may be found in the online version of this article at the publisher's web-site:

**Table S1.** Level of evidence and grade of recommendation.